

DOWN-2 SERIES

Power Pack Wall Pack



Project:	
Type:	
Catalog #:	



The DOWN-2 PowerPack full cutoff wall luminaire is available in three wattages with a specially designed Type IV wide forward throw optical distribution that is designed to replace HID lighting systems of 175W, 250W or 400W MH or HPS. One 174 watt WPC45 with increased mounting height can replace 2 existing 400W MH wall packs to dramatically lower energy costs. Typical wall mounted lighting applications include retail centers, industrial parks, schools and universities, public transit and airports, office buildings and medical facilities. Mounting heights of 18 to 35 feet can be used based on light level and uniformity requirements.

Specifications and Features:

Housing:

Die Cast Aluminum Housing with Full Cutoff Front Frame, Integral Heat Sinking and Driver Compartment. UV-Stabilized Polycarbonate Vandal-Resistant Lens Area on Housing for Use with Microwave Sensors. Twist-Lock Photocell/Smart Controls Adaptable. Nickel-Plated Stainless Steel Hardware.

Listing & Ratings:

CSA: Listed for Wet Locations, ANSI/UL 1598, 8750; IP66 Sealed LED Compartment.

Finish:

Textured Architectural Bronze Powdercoat Finish Over a Chromate Conversion Coating. Custom Colors Available Upon Request.

Lens:

Clear One-Piece Molded Type IV UV-Stabilized Polycarbonate Lens.

Mounting Options:

Mount Directly Over a 4" Recessed Outlet Box, Includes Easy-Hang "Two Hands Free" Wall Mounting Bracket with Built-In Level. Optional Trim Plate is Available for Use in Retrofit Applications to Cover Wall Surface Blemishes.

EasyLED LED:

Aluminum Boards

Wattage:

81w: Array: 80.8w, System: 92.8w (175w HID Equivalent)
 112w: Array: 111.9w, System: 131w (250w HID Equivalent)
 174w: Array: 174.1w, System: 187.5w (400w HID Equivalent)

Driver:

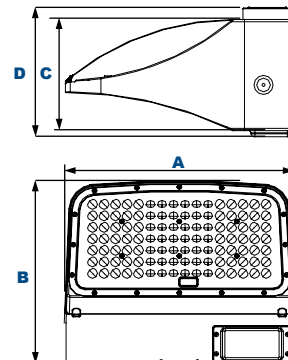
Electronic Driver, 120-277V, 50/60Hz or 347-480V, 50/60Hz; Less Than 20% THD and PF>0.90. Standard Internal Surge Protection 6kV. 0-10V Dimming Standard for a Dimming Range of 100% to 10%; Dimming Source Current is 150 Microamps.

Controls:

Fixtures Ordered with Factory-Installed Photocell or Motion Sensor Controls are Internally Wired for Switching and/or 1-10V Dimming Within the Housing. Remote Direct Wired Interface of 1-10V Dimming is Not Implied and May Not Be Available, Please Consult Factory. Fixtures are Tested with LEPC Controls and May Not Function Properly With Controls Supplied By Others. Fixtures are NOT Designed for Use with Line Voltage Dimmers.

Warranty:

5-Year Warranty for -40°C to +50°C Environment.



Dimensions

Width (A)	15" (380mm)
Length (B)	12" (302mm)
Height 1 (C)	5 1/4" (146mm)
Height 2 (D)	6" (154mm)

Order Information Example:

Model	Optics	Wattage	Driver	CCT	Lens	Color	Options
DW2= PowerPack Wall Mount	5=Type IV	81=81w 112=112w 174=174w	LV=120-277V HV=347-480V	4K=4000K 5K=5000K	C=Clear Molded UV-Stabilized Polycarbonate Lens	Z=Bronze C=Custom (Consult Factory)	SF=Single Fuse (120-277V Only) DF=Double Fuse (120-277V Only) SP=Surge Protection R3=3-Pin Twist Lock Photocell Receptacle R5=5-Pin Twist Lock Photocell Receptacle R7=7-Pin ANSI C136.41—2013 Twist Lock Photocell Receptacle PC1=Photocell, 120VAC PC3=Photocell, 120-277VAC S2=Microwave Sensor with Dimming for Mounting Heights of 8 to 40'. (120-277V Only) S4=Microwave On/Off Motion Sensor for Mounting Heights of 8' to 19', (120-277V Only) BU=Battery Backup, 90 Minutes (81w and 112w only)

Accessories & Replacement Parts:

Accessories (Order Separately, Field Installed)

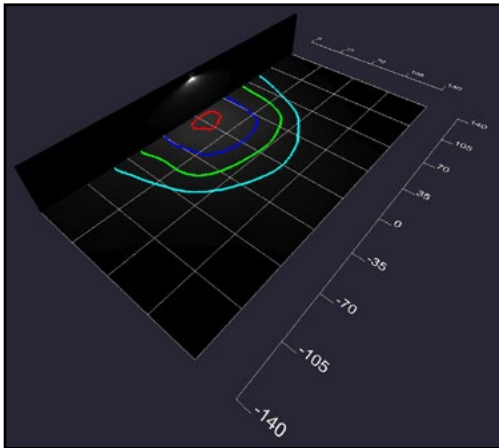
DW2-A	Twist Lock Non-Shorting (Open) Cap Disconnects Service to Fixture for Temporary or Permanent Disabling (Fixture Always Off). IP65, 480V Maximum.
DW2-B	Twist Lock Shorting Cap Provides Fixed Service to Fixture (Fixture Always on). IP65, Rated Load 7200w Tungsten.
DW2-C	110-120VAC Instant Twist Lock Photocell
DW2-D	120VAC Time Delay Twist Lock Photocell
DW2-E	277VAC Time Delay Twist Lock Photocell
DW2-F	120-277VAC Universal Twist Lock Photocell
DW2-G	480VAC Time Delay Twist Lock Photocell. For 480V use only.
DW2-H	Aluminum Two-Piece Trim Plate, Bronze Powdercoat Finish, 16½" W x 8¾" H

Replacement Parts (Order Separately, Field Installed)

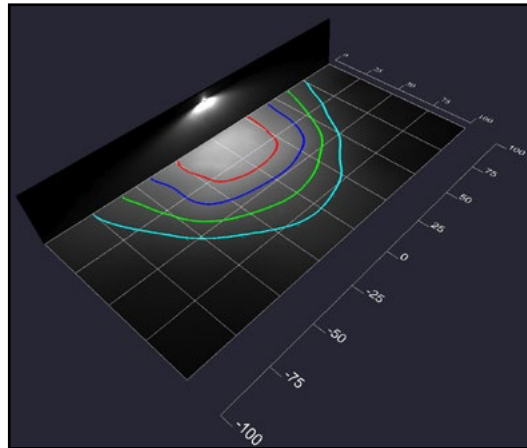
P18100	120VAC Photocell
P18103	120-277VAC Photocell
P17117	Internal Microwave Sensor with Dimming for Mounting Heights of 8 to 40'. 120-277VAC, 50/60Hz.
P17123	Internally Mounted Microwave On/Off Motion Sensor for Mounting Heights of 8' to 19', 120-277VAC, 50/60Hz

For Replacement Battery Backup, see the LEPG LED Battery Backup Specification Sheet.

Photometric Data



Type IV
Grid in MH
MH=35 Feet



Type IV
Grid in MH
MH=25 Feet

Photometric Performance

LED Board Watts	Drive Current (mA)	Input Watts	Optics	5000 CCT 80 CRI			4000 CCT 80 CRI		
				Lumens	LPW	B U G	Lumens	LPW	B U G
81w	525	93	Type IV	10,402	112	3 3 3	9,700	104	3 3 3
112w		131		14,049	107	3 0 3	13,636	104	3 0 3
174w		188		20,704	110	3 0 3	20,327	108	3 0 3

Projected Lumen Maintenance

Data shown for 5000 CCT			Compare to MH			
TM-21-11	Input Watts	Initial	25,000 Hrs	50,000 Hrs	100,000 Hrs	Calculated LED Life
L70 Lumen Maintenance @ 25°C / 77°F	All wattages up to and including 188w	1.00	0.99	0.98	0.95	646,000
L70 Lumen Maintenance @ 50°C / 122°F		1.00	0.98	0.97	0.93	455,000
L80 Lumen Maintenance @ 40°C / 104°F		1.00	0.98	0.97	0.94	320,000

NOTES:

1. Projected per IESNA TM-21-11. Data references the extrapolated performance projections for the 525mA base model in a 25°C ambient, based on 10,000 hours of LED testing per IESNA LM-80-08.
2. Compare to MH box indicates suggested Light Loss Factor (LLF) to be used when comparing to Metal Halide (MH) systems.