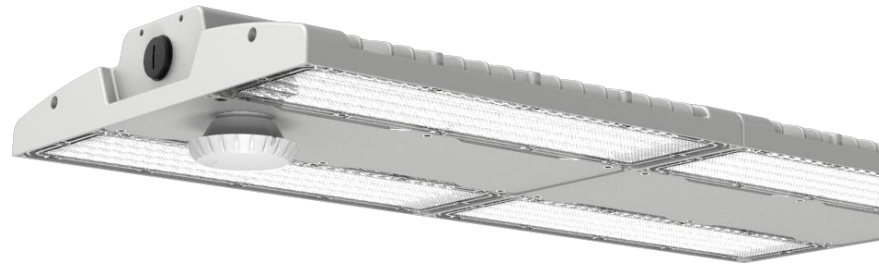


TRI SERIES - Industrial Linear Highbay



Project:	
Type:	
Catalog #:	



Refined with IP66 equal for indoor & outdoor application, it continues to improve integral and customized intelligent control: PIR Sensor, Microwave Motion Sensor, photocell, Zigbee, as well as DALI, emergency function for huge energy saving. Further more, we could do some customization, such as 180LM/W, LED power adjustable, CCT selectable, Anti-glare lens, wire guard.

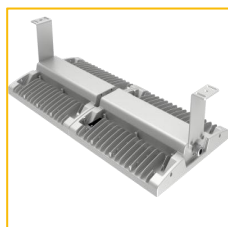
FEATURES

- 100W/150W/200W/300W/400W
- CCT Selectable
- Wattage Selectable
- Low UGR
- IP66 IK10 rated
- Specialized asymmetrical optic 40°*140° for aisle, workshop and warehouse.
- Operating Temperature 30°C to + 50°C (-22°F to 122°F)
- Smart control all in one, including PIR, Microwave motion sensor, photocell, Zigbee, Emergency Battery Backup.

MOUNTING



Loop mounting



Ceiling mounting



±60° rotatable
bracket mounting

ACCESSORIES



Safety Chain
Stainless steel materials



±60deg rotatable bracket
SPCC materials.



Ceiling mount bracket
SPCC materials.



Microwave motion sensor
120-277Vac input, IP65 rating,
max detect height is 15m.

Remote control



PIR sensor
120-277Vac input,
IP65 rating, max
detect height is 15m.



Daylight sensor
1-10V DC input, IP20 rating,
daylight Harvesting function.



Zigbee wireless control
1pcs for each luminaire.

Zigbee gateway
1pcs can control 100pcs
fixtures.



Zigbee daylight sensor
An optional sensor control for
Zigbee system, 100-277Vac
IP65 rating.



**Zigbee microwave
motion sensor**
An optional sensor control
for Zigbee system,
100-277Vac input, IP65 rating.



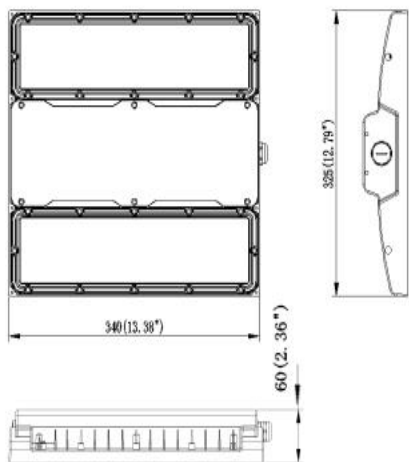
Optic lens
PC materials.
Code: please refer to Photometry



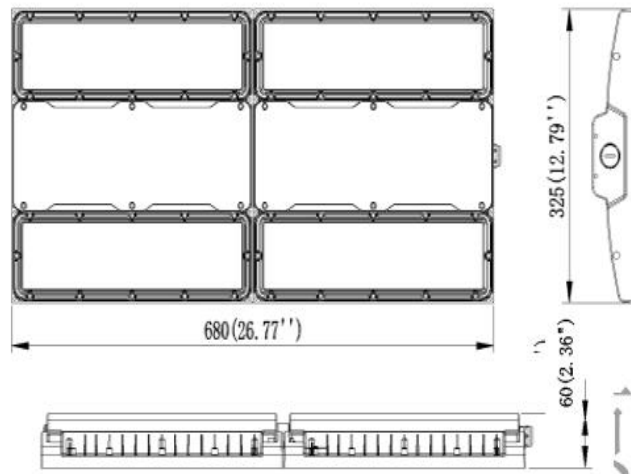
**Emergency Battery
Backup**

TRI SERIES - Industrial Linear Highbay

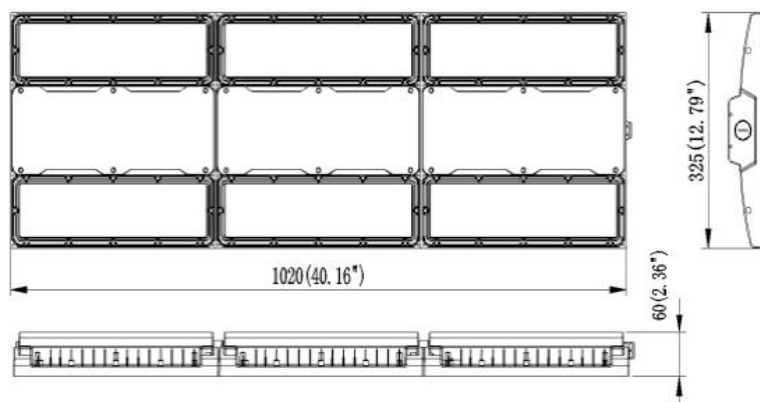
DIMENSIONS



100W/150W



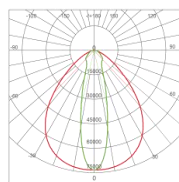
200W/300W



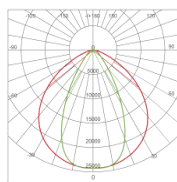
400W

PHOTOMETRICS

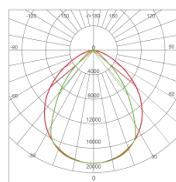
Strip optic lens



25x85°

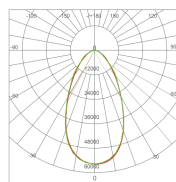


60x100°

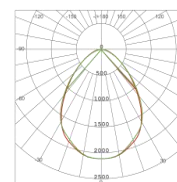


80x100°

Dotted optic lens



60°



90°

Lumen Package

- 100W = 14,000lm
- 150W = 21,000lm
- 200W = 28,000lm
- 300W = 42,000lm
- 400W = 56,000lm

TRI SERIES - Industrial Linear Highbay



ORDERING INFORMATION

Series	Wattage	Voltage	CCT	Optical Lens	Mounting	Accessories	Controls	Warranty
TRI	10 = 100W 15 = 150W 20 = 200W 30 = 300W 40 = 400W 1040A = Wattage Adjustable	LV = 120-277V (STD) HV = 277-480V	S = 3000K I = 4000K C = 5000K T = 6000K CCT = Color Tunable	L401 = 25° X 85° L402 = 60° X 100° L403 = 80° X 100° *L60 = 60° *L90 = 90° * UGR < 15	S = Aircraft Cable CM = Ceiling Mount RM = Rotatable Bracket	CL-? Custom Power Cable PLG = Plug EM = Integral Battery Back Up	ND = NON-DIM DIM = 1-10V Dimming MS = Microwave Motion Sensor PIR = PIR Sensor DAY = Daylight Sensor ZC = Zigbee Wireless Control ZB = Zigbee Gateway ZDAY = Zigbee Daylight Sensor ZMS = Zigbee Motion Sensor	5Y = 5 Year (STD) 10Y = 10 Year