

ARC30 Aeroform Round Canopy



Project:	
Type:	
Catalog #:	

The ARC30 Aeroform Architectural Round Canopy is available in Type II, III, IV or V distributions designed to replace HID lighting systems up to 400w MH or HPS. Typical area lighting applications include retail centers, industrial parks, schools and universities, public transport and airports, office buildings and medical facilities. Mounting heights of 12 to 30 feet can be used based on light level and uniformity requirements.

Specifications and Features:

Housing:

Die Cast and Sand Cast Aluminum Housing, Integral Heat Sinking. Includes 3' Cord.

Listing & Ratings:

CSA: Listed for Wet Locations, ANSI/UL 1598, 8750; IP65

Finish:

Bronze or White Powdercoat Finish Over a Chromate Conversion Coating. Custom Colors Available Upon Request.

Lens:

Clear Polycarbonate Vandal-Resistant Array Lens with Integral Optics. Gasketed to Seal LED Array

Mounting Options:

Surface Mount Model (NM) Includes Easy-Hang Bracket Allowing One-Person Installation, Fits Standard 4" Electrical Box. Adjustable Height Trunnion (T) and Pendant (PA) Models are Shipped Ready For Field Installation of the Mount. Mounts are Shipped in a Separate Carton.

EasyLED LED:

Aluminum Boards

Wattage:

37w Array: 37w, System: 41w; (70-150w HID Equivalent)
 65w Array: 65.3w, System: 72w; (150-250w HID Equivalent)
 100w Array: 100w, System: 111w; (150-250w HID Equivalent)
 140w Array: 139.9w, System: 156w; (250-400w HID Equivalent)

Driver:

Electronic Driver, 120-277V, 50/60Hz or 347-480V, 50/60Hz; Less Than 20% THD and PF>0.90. Standard Internal Surge Protection 6kV. 0-10V Dimming Standard for a Dimming Range of 100% to 10%; Dimming Source Current is 150 Microamps.

Controls:

Fixtures Ordered with Factory-Installed Motion Sensor Controls are Internally Wired for Switching and/or 1-10V Dimming Within the Housing. Remote Direct Wired Interface of 1-10V Dimming is Not Implied and May Not Be Available, Please Consult Factory. Fixtures are Tested with LEPC Controls and May Not Function Properly With Controls Supplied By Others. Fixtures are NOT Designed for Use with Line Voltage Dimmers.

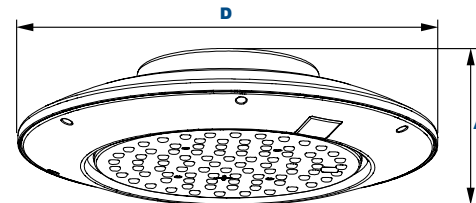
Warranty:

5-Year Warranty for -40°C to +50°C Environment.



Dimensions

Diameter (D)	18" (457mm)
Height (A)	4" (104mm)



Certification & Listings:



Order Information Example:

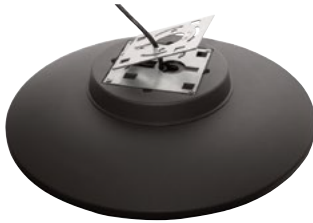
ARC30365A3CWEHBSF

ARC30					C			
Model	Optics	Wattage	Driver	CCT	Lens	Color	Mounting	Options
ARC30 = EasyLED Aeroform Round Canopy	2=Type II 3=Type III 4=Type IV 5=Type V	37 =37w 65 =65w 100 =100w 140 =140w	A=120-277V B=347-480V	3 =3000K* 4 =4000K 5 =5000K *37 and 65w Only	C=Clear Polycarbonate Array Lens	B=Bronze W=White C=Custom (Consult Factory)	EHB =Easy-Hang Bracket Only T=Trunnion* P =Pendant* *Mounting Shipped Separately	SF=Single Fuse DF=Double Fuse SP=Surge Protection S2=Microwave Sensor with Dimming for Mounting Heights of 8 to 40'. (120-277V Only)

ARC30 Aeroform Round Canopy



Mounting Options:



ARC30 with Easy-Hang Bracket (NM)

Stamped Steel 2-Piece Bracket Allows One-Person Installation. Mounts Directly to Standard 4" Electrical Box



ARC30 with Adjustable Trunnion Mount (T)

Stamped Steel Height Adjustable Trunnion, Powdercoat Finish, Includes Hardware



ARC30 with Pendant Mount (PA)

Includes Top and Bottom Covers, Brackets, and 3/4" Diameter, 15" Long Downrod, Powdercoat Finish, Includes Hardware.

Accessories & Replacement Parts:



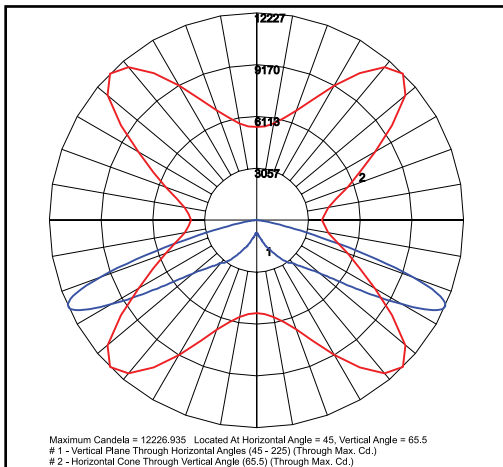
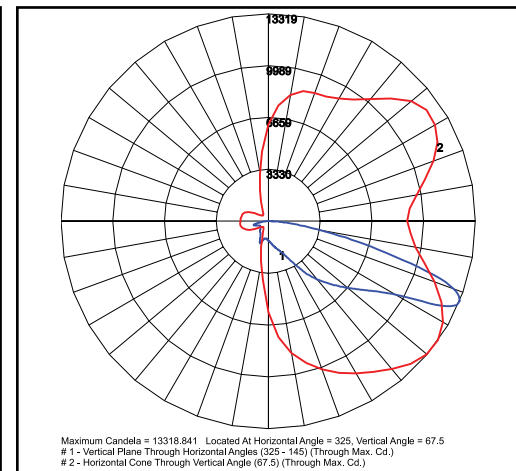
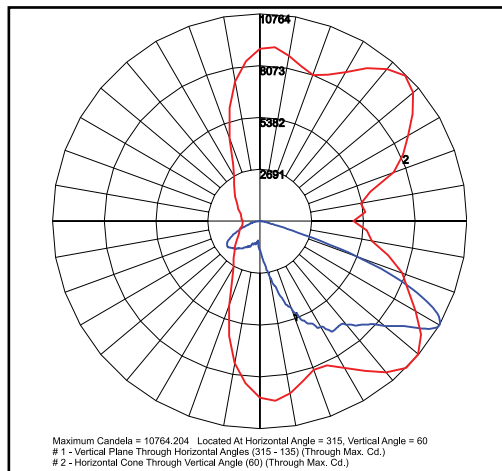
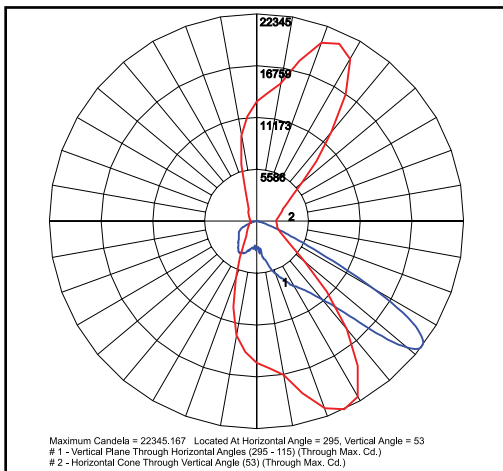
*Shown Mounted

Replacement Parts (Order Separately, Field Installed)

T	Height Adjustable Trunnion, Stamped Heavy Duty Steel, Powdercoat Finish
P	Pendant Mount Kit Includes Top & Bottom Cover, Brackets, 3/4" Dia X 15" L Downrod, and Hardware. Powdercoat Finish
MS	Internal Microwave Sensor with Dimming for Mounting Heights of 8 to 40'. 120-277VAC, 50/60Hz

*Specify Color: Z=Bronze, W=White, C=Custom (Consult Factory)

Photometric Data



Photometric Performance

LED Board Watts	Drive Current (mA)	Input Watts	Optics	4000 CCT 70 CRI				
				Lumens	LPW	B	U	G
37w	525	42	Type II Clear	5,469	130	1	0	1
			Type III Clear	5,491	131	2	0	2
			Type IV Clear	5,010	119	1	0	2
			Type V Clear	5,495	131	3	0	1
65w		74	Type II Clear	9,608	130	2	0	2
			Type III Clear	9,646	130	3	0	3
			Type IV Clear	8,803	119	2	0	3
			Type V Clear	9,653	130	3	0	2
100w		114	Type II Clear	14,782	130	2	0	2
			Type III Clear	14,842	130	3	0	3
			Type IV Clear	13,543	119	3	0	3
			Type V Clear	14,851	130	4	0	2
140w		159	Type II Clear	20,694	130	3	0	3
			Type III Clear	20,777	131	3	0	3
			Type IV Clear	18,959	119	3	0	4
			Type V Clear	20,791	131	4	0	2