

VF2 SERIES NSF/ANSI2 FOOD ZONE LINEAR HIGH BAY



Project:	
Type:	
Catalog #:	



NSF/ANSI2 FOOD ZONE Rated



FEATURES

- **High performance LED LUXEON SMD**
- Lumen output 12,000 to 45,000 lumens
- Efficacy Up To 150lm/W
- LED Lifespan> 50,000 hours (Ta=30°C @L70).
- CCT: 3000K 4000K 5000K 6000K (5000K standard).
- Aluminum alloy (AL6063) housing with white epoxy powder coat finish standard (Unpainted AL6063 available)
- FY driver, 0-10V dimming. 80W-200W uses single driver, 300W uses double drivers.
- Consult factory for custom cord and wiring options. Fixture comes standard with 3ft whip and IP69K waterproof connector.
- Polycarbonate lens - safe for food processing applications.
- External PIR sensor (IP65) and motion sensor options available. Color Tuning LED/controller available

MECHANICAL

- Robust AL6063 housing withstands harsh industrial environments.
- Stainless Steel suspended mounting cable and surface mounting brackets options available.
- Standard with mounting loops for chain hanging.
- Achieves -40C-65C ambient rating. Good for cold storage and high heat applications.

Color Changing High Bay



WARRANTY AND LISTING

- UL 1598-2008
- **DLC premium**
- **IP69K rated**
- **NSF/ANSI 2 (approved for food zone, splash zone, and non-food zone)**
- **1500psi hosedown**
- **-40°C to 65°C Cold Storage/High Temp**
- **Dimming/Color tuning controls**
- **Circadian Rhythms in animals**
- 5 year warranty @ 24 hour operation

ELECTRICAL

- 100-277V Standard. 200-480V available
- 3000K, 4000K, 5000K, 6000K CCT available

ORDERING INFORMATION

SERIES	WATTAGE	VOLTAGE	CCT	OPTIC	DRIVER	ACCESSORIES
VF2	8 = 80W	LV = 120-277V	S = 3000K	15°	D* = Dimmable	CL** = Cable Length
	12 = 120W	HV = 200-480V	I = 4000K	25°	ND = Non Dimmable	MS***= Motion Sensor
	16 = 160W		C = 5000K	40°		PIR = Passive Infrared Sensor
	20 = 200W		K = 6000K	60°		CT= Color tuning driver
	30 = 300W			90°		SM= Surface mount (no loops)
				120°		
				30° x 15°		AH= Aluminum Housing no paint
				49° x 21°		
				136° x 78°		

*Adds dimming wire to top

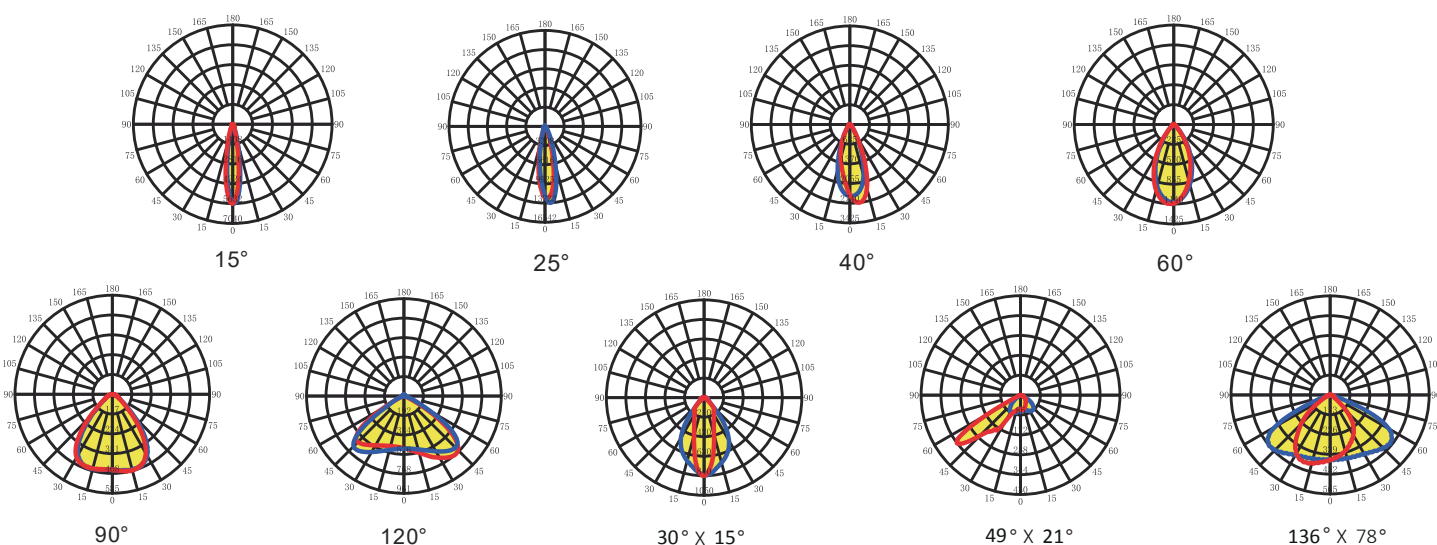
**Specify cable length.

***Only IP65

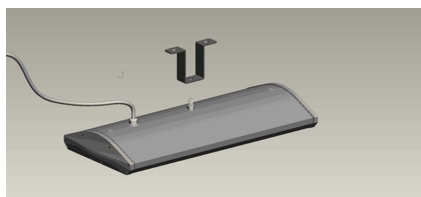
TECHNICAL PARAMETERS

Power	80w	120w	160w	200w	300w
Input Voltage	AC100-277V/AC200-480V, 50/60HZ				
Power Factor	>0.95				
Working Temperature	-40°C~50°C				
Lumen Efficacy	135lm/w				
Lumen	12000 lm	18000 lm	24000 lm	30000 lm	45000 lm
Color Temperature	3000K-6500K				
Beam Angle	15°/25°/40°/60°/90°/120°/30°X15°/49°X21°/136°X78°				
CRI	Ra>70/Ra>80				
Housing Color	White				
Lifespan	>50.000 hours@L70				
Fixture Dimension	448*250*69mm	556*250*69mm		810*250*69mm	

BEAM ANGLE



Options:



Stainless Steel Surface
mount bracket with power
wire, no dimming



Color tuning remote
Part # CTR-1



Dimming-programing
remote
Part # DPR-1



Chain/hook mounting kit
CHMK-1