

Project:	
Type:	
Catalog # :	

FME Lighting | 877 - 234 - 8460 | info@fmelighting.com

IP65
IK08

SPECIFICATIONS

VOLTAGE	120-277 VAC 50 / 60 Hz
WATTAGE	100W, 120W, 150W, 200W, 240W
COLOR TEMP	5000K, 4000K Kelvins
OPERATING TEMP	Normal: -30°C to + 65°C (-22°F to 149°F) Sensor: 0°C to + 50°C (32°F to 122°F)
HOUSING	Aluminum Alloy with Powder Coat
LENS	Polycarbonate Optical Lens
DRIVER TYPE	Constant Current (CC)
POWER FACTOR	>0.93
POWER SUPPLY	MOSO
CRI	Ra70
LED TYPE	LED 2835
DIMMING	1-10V Dimming
PROTECTION	IP65 & IK08 4kV line-line, 6kV line-earth
WARRANTY	5 Year Limited Warranty

KEY FEATURES

- **High Efficiency:** High efficacy up to 200LM/W Applications.
- **Versatile Installation:** Offers flexible mounting options to suit various installation needs across different environments. Ceiling, Loop and Pendant mounting.
- **Built-In Microwave Sensor:** Features a built-in microwave motion sensor, making the fixture more compact and controllable.
- **No Dust Accumulation:** Well-sealed with an IP65 dust-tight and waterproof rating. Ensuring better heat dissipation and longer lifespan, ideal for heavy dust environments.
- **Wide Application Range:** Suitable for various environments including warehouses, industrial facilities, exhibition centers, shopping malls, gymnasiums, airports, and toll stations.

LUMENS, OPTICS & DIMENSIONS

*See Page 2 for All Photometry Diagrams.

*See Page 2 for All Dimensions Diagrams.

Wattages	100W	120W	150W
Luminous Flux (±10%)	20000 lm	24000 lm	30000 lm
Efficacy(5000K Ra70)	200lm/W	200lm/W	200lm/W

Wattages	200W	240W
Luminous Flux (±10%)	40000 lm	45600lm
Efficacy(5000K Ra70)	200lm/W	190lm/W

Life Time of LED @Ta=25°C

L90	40,000 hrs
L80	84,000 hrs
L70	134,000 hrs

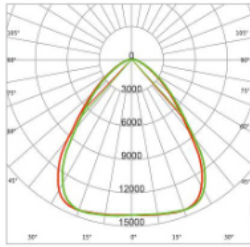
ORDERING INFORMATION

ORDERING GUIDE

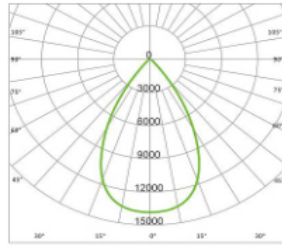
Series	Wattage	Voltage	CCT	Beam Angle <small>See Chart on Page 2</small>	Mounting	Accessories
HOT-UFO	10 = 100W 12 = 120W 15 = 150W 20 = 200W 24 = 240W	LV = 100-277 VAC	C = 4000K K = 5000K (Standard)	W = 90° circular lens X = 60° circular lens Y = 120° circular lens Z = 40° circular lens	LM = Loop Mount PM = Pedant Mount 3/4 NPT AB = ±60° adjustable bracket NAB = Non adjustable bracket	OL = Optic lens PR1 = PC reflector (90°) PR2 = PC reflector (100°) SC_ = Safety chain* AF = Aluminum reflectors MS = Plug-and-play microwave sensor

*Replace _ with desired available length: 0.25m, 1m, 1.5m, and 5m long.

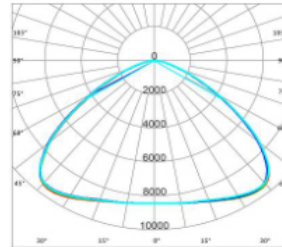
PHOTOMETRY



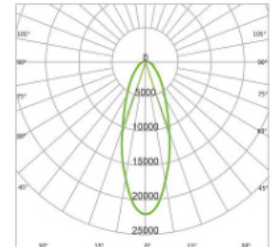
W
(90° circular Lens)



X
(60° circular Lens)

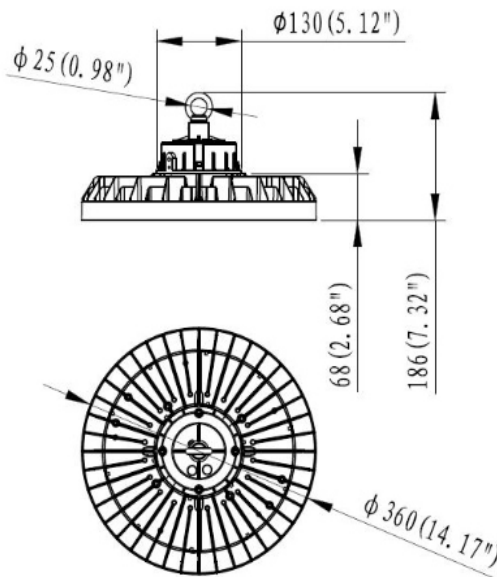


Y
(120° circular Lens)

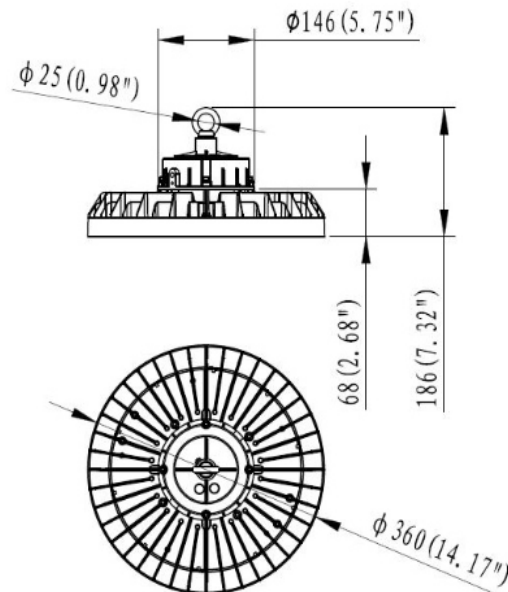


Z
(40° circular Lens)

DIMENSIONS



100W / 120W / 150W



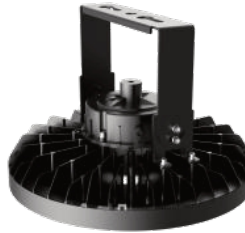
200W / 240W

Wattage	Product Dimension	Luminaire Net Weight	Export Carton Size	Gross Weight
100, 120, 150W	φ360 x 186mm (∅ 14.17" x 7.32")	3.9±0.3kg (8.6±0.66Lbs)	428x428x225mm (16.85" x 16.85" x 8.86")	5.3±0.3kg (11.68±0.66Lbs)
200, 240W	φ360 x 186mm (∅ 14.17" x 7.32")	4.3±0.3kg (9.47±0.66Lbs)	428x428x225mm (16.85" x 16.85" x 8.86")	5.7±0.3kg (12.57±0.66Lbs)

MOUNTING & ACCESSORIES



Loop Hanging



Ceiling Mounting



Pendant Mounting



Optic lens

High transmittance PC materials, UV test approval.

Please refer to **Photometry** for different beam angle.



±60° adjustable bracket

SPCC materials with outdoor powder coating. Ceiling Mounting



Non adjustable bracket

SPCC materials with outdoor powder coating, Non adjustable. Ceiling Mounting



Pipe mount bracket

support 3/4 NPT. Pendant Mounting



Safety chain

304 stainless steel, available for 0.25m, 1m, 1.5m and 5m long.



Plug-and-play microwave sensor

1pcs for each luminaire.



Aluminium reflectors

Different beam angle, anti glare effect, black/silvery color options.