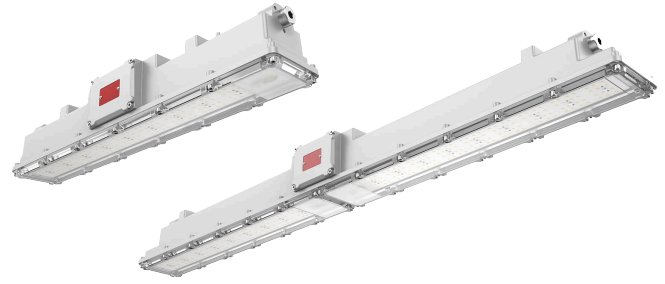


Project:	
Type:	
Catalog # :	

FME Lighting | 877 - 234 - 8460 | info@fmelighting.com



### SPECIFICATIONS

VOLTAGE	100-277VAC / 277-480VAC 50 / 60 Hz
WATTAGE	30W, 40W, 50W, 60W, 70W, 80W, & 100W
COLOR TEMP	Red/Green/Blue/Amber/5000K 2000, 2200K, 2500K, 2700K, 3000K, 3500K, 4000K, 4500K, 5700K, 6500K
OPERATING TEMP	See Chart on Page 4.
HOUSING	Fiberglass Reinforced Polycarbonate
LENS	Clear Polycarbonate / Diffused Polycarbonate
DRIVER TYPE	Constant Current (CC)
POWER FACTOR	>0.9
CRI	Ra70/Ra80/Ra90
LED LIFESPAN	Minimum 50,000h
DIMMING	1-10V Dimming* <i>*30W,40W &amp; 50W Dimming is only available on 100-277VAC</i>
PROTECTION	IP66 & IK08 • LIH-3/4/5 - 4kV line-line, 6kV line-earth • LIH-6/7/8/10 - 6kV line-line, 10kV line-earth
WARRANTY	5 Year Limited Warranty

### CERTIFICATIONS

- Class I, Division 2 Groups A, B, C, D
- Class II, Division 2 Groups F, G
- Class III
- UL844
- UL 50 / UL 50E
- UL 1598 / UL 1598A
- UL8750
- UL924
- CSA C22.2 No.94.1
- CSA C22.2 No.94.2
- CSA C22.2 No.137
- CSA C22.2 No.141
- CSA C22.2 No.250.0
- Type 4X
- IP66 & IK08
- Suitable for: Wet & Marine Locations

### KEY FEATURES

- **High Efficiency:** Delivers up to 160 lm/W with lumen packages ranging from 4800 lm to 16000 lm.
- **Versatile Installation:** Supports various installation methods including ceiling mount, trunnion mount, hoop mount, loop mount, and pendant mount.
- **Emergency Lighting:** Equipped with 9W emergency lighting for 1.5 hours.
- **Robust and Durable:** Waterproof, dustproof, anti-corrosion, and shock-resistant design.
- **Wide Application Range:** Suitable for various industries including chemical, oil and gas, petrochemical, pulp and paper, foundries, manufacturing, waste and sewage treatment, power generation, and paint spray booths.

### LUMENS, OPTICS & DIMENSIONS

*\*See Page 4 for All Photometry Diagrams.  
\*See Page 2 for All Dimensions Diagrams.*

## ORDERING INFORMATION

### ORDERING GUIDE

Series	Wattage	Voltage	CCT	Dimming	Lens	Beam Angle	Mounting	Accessories
LIH	3 = 30W	LV = 100-277 VAC HV = 277-480 VAC	R = Red 20 = 2000K 40 = 4000K	ND = None Dimming D = Dimming*	CL = Clear PC DL = Diffused PC	A = Type A H = Type H B = Type B I = Type I C = Type C J = Type J D = Type D L = Type L E = Type E N = Type N F = Type F O = Type O G = Type G P = Type P	CM = Ceiling Mount TM = Trunnion Mount LM = Loop Mount PM-1 = Pedant Mount (1"NPT) PM-3/4 = Pedant Mount (3/4"NPT) HM = Hoop Mount	BLANK EB = Emergency Battery
	4 = 40W		G = Green 22 = 2200K 45 = 4500K					
	5 = 50W		B = Blue 25 = 2500K 50 = 5000K					
	6 = 60W		A = Amber 27 = 2700K 57 = 5700K					
	7 = 70W		30 = 3000K 65 = 6500K					
	8 = 80W		35 = 3500K					
	10 = 100W							

*\*On the 30W,40W & 50W, Dimming is only available on 100-277VAC*

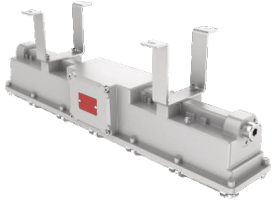
### DIMENSIONS

Unit: mm (inch)

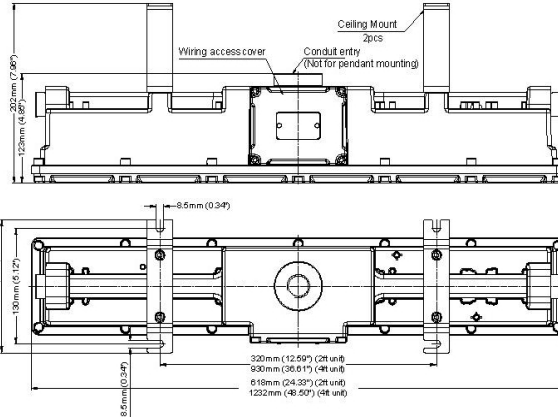
#### Ceiling Mount (CM)



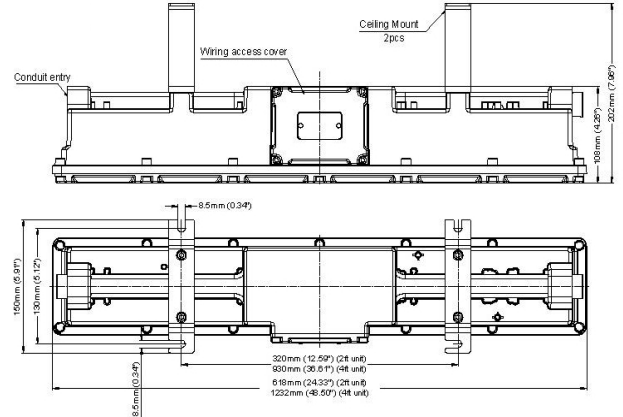
Dimension: 150\*30\*100mm  
Surface Treatment: Powder coating  
Color: Grey



#### Cable entry from the top



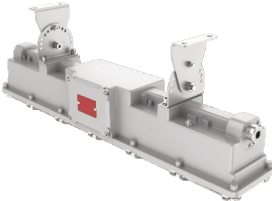
#### Cable entry from the side



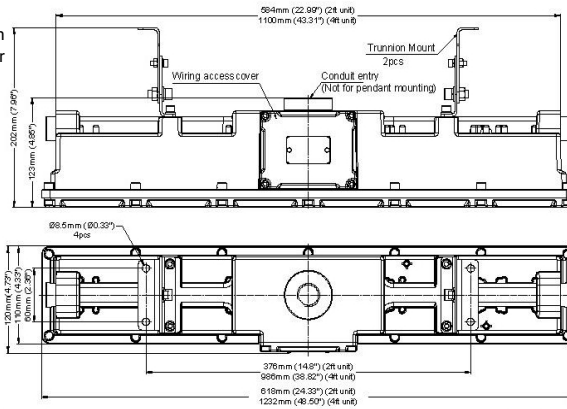
#### Trunnion Mount (TM)



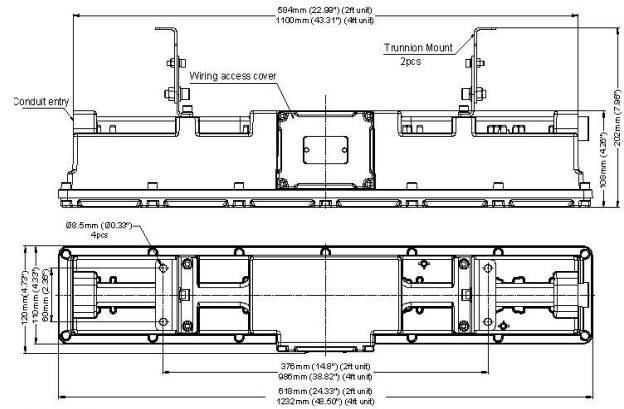
Dimension: 86\*43\*100mm  
Surface Treatment: Powder coating  
Color: Grey



#### Cable entry from the top



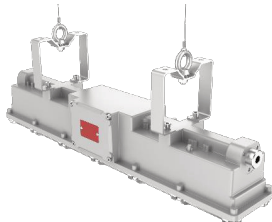
#### Cable entry from the side



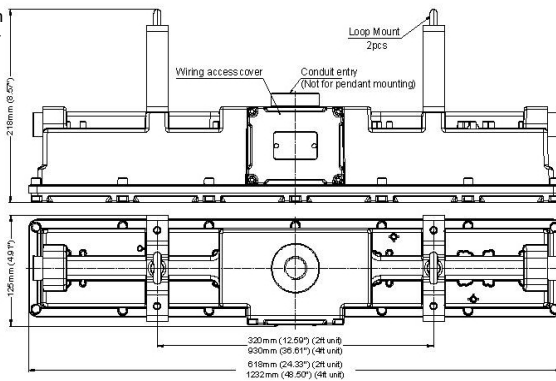
#### Loop Mount (LM)



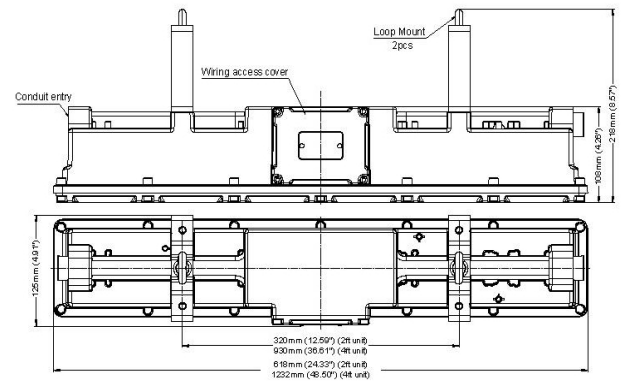
Dimension: 119\*25\*115mm  
Surface Treatment: Powder coating  
Color: Grey



#### Cable entry from the top



#### Cable entry from the side



Notice: 2ft include: 30W, 40W, 50W 4ft include: 60W, 70W, 80W, 100W

### DIMENSIONS

Unit: mm (inch)

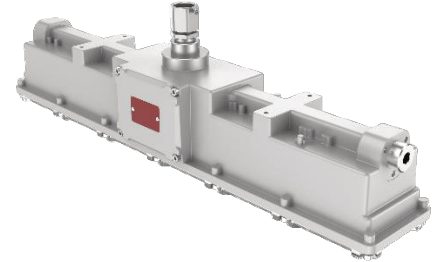
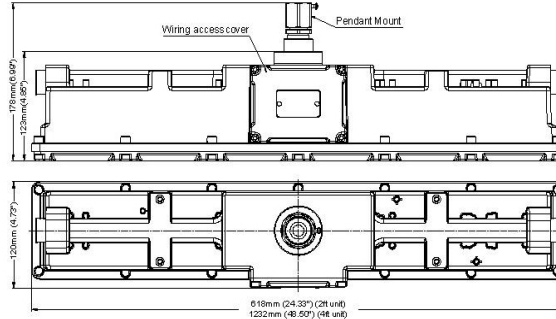
#### Pendant Mount (PM-\*)



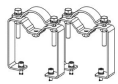
Order info: PM-3/4  
Dimension:  $\Phi 33 \times 65$ mm  
Surface Treatment: Surface passivation  
Color: Stainless steel color  
Tube specification: M25X1.5 or 3/4"NPT  
Cable outer diameter: 8-12



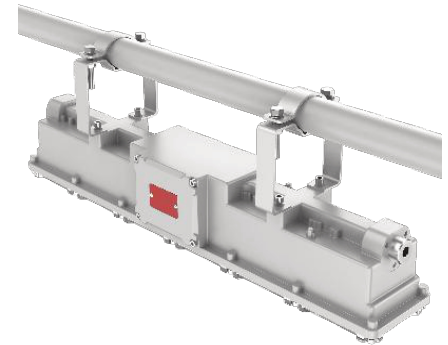
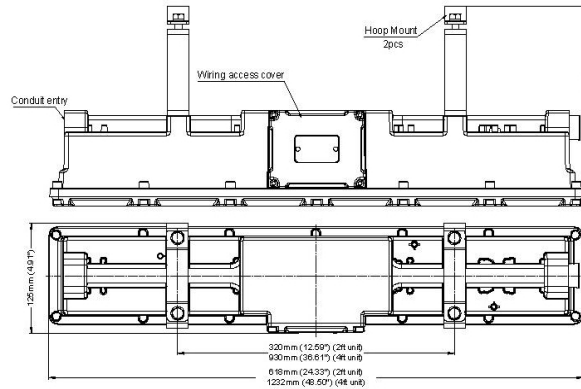
Order info: PM-1  
Dimension:  $\Phi 41 \times 65$ mm  
Surface Treatment: Surface passivation  
Color: Stainless steel color  
Tube specification: M32X1.5 or 1"NPT  
Cable outer diameter: 15-19



#### Hoop (Clamp) Mount (HM)



Dimension: 119\*25\*122mm  
Surface Treatment: Powder coating  
Color: Grey

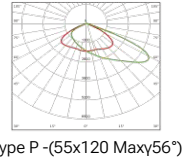
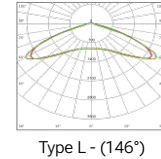
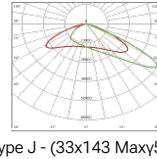
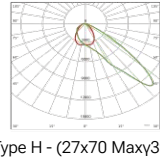
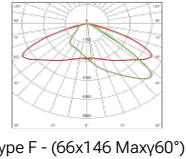
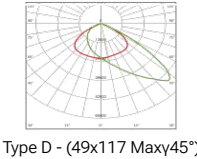
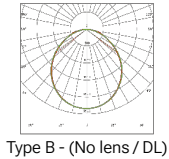
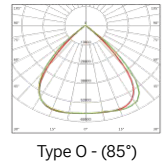
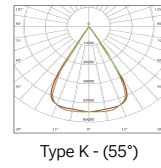
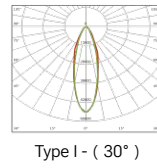
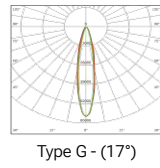
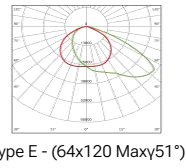
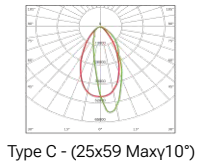
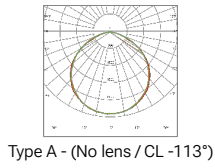


Notice: 2ft include: 30W, 40W, 50W 4ft include: 60W, 70W, 80W, 100W

#### Dimensions and Mount

		30W to 50W	60W to 100W
<b>Product Dimension mm ( inch )</b>			
	Ceiling Mount	618x150x202 (24.33"x5.91"x7.96")	1232x150x202 (48.50"x5.91"x7.96")
	Trunnion Mount	618x120x202 (24.33"x4.73"x7.96")	1232x120x202 (48.50"x4.73"x7.96")
	Hoop Mount	618x125x225 (24.33"x4.91"x8.84")	1232x125x225 (48.50"x4.91"x8.84")
	Loop Mount	618x125x218 (24.33"x4.91"x8.57")	1232x125x218 (48.50"x4.91"x8.57")
	Pendant Mount	618x120x178 (24.33"x4.73"x6.99")	1232x120x178 (48.50"x4.73"x6.99")
<b>Luminaire Net Weight</b>			
	Ceiling Mount	3.4kg (7.48Lbs)	5.0kg (11Lbs)
	Trunnion Mount	3.5kg (7.7Lbs)	5.1kg (11.22Lbs)
	Hoop Mount	3.5kg (7.7Lbs)	5.1kg (11.22Lbs)
	Loop Mount	3.4kg (7.48Lbs)	5.0kg (11Lbs)
	Pendant Mount	3.3kg (7.26Lbs)	4.9kg (10.78Lbs)
<b>Gross Weight</b>			
	Ceiling Mount	4.0kg (8.8Lbs)	5.9kg (12.98Lbs)
	Trunnion Mount	4.1kg (9.02Lbs)	6.0kg (13.2Lbs)
	Hoop Mount	4.1kg (9.02Lbs)	6.0kg (13.2Lbs)
	Loop Mount	4.0kg (8.8Lbs)	5.9kg (12.98Lbs)
	Pendant Mount	3.4kg (8.58Lbs)	5.3kg (11.66Lbs)

### PHOTOMETRY



### LUMENS

#### Luminous Flux (±10%)

30W	40W	50W	60W	70W	80W	100W
4800 lm	6400 lm	8000 lm	9600 lm	11200lm	12800 lm	16000 lm

Efficacy(5000K Ra70) - 160lm/W

#### Life Time of LED @Ta=25°C

L90	77,000 hrs
L80	175,200 hrs
L70	282,900 hrs

### OPERATING TEMPERATURE

Model	Temperatures
30W/40W/60W/70W/80W	-40°C to + 55°C (-40°F to +131°F)
50W	-40°C to + 45°C (-40°F to +113°F)
100W	-40°C to + 40°C (-40°F to +104°F)
Emergency Model: 30W/40W/60W/70W/80W	0°C to + 55°C (32°F to +131°F)
Emergency Model: 50W	0°C to + 45°C (32°F to +113°F)
Emergency Model: 100W	0°C to + 40°C (32°F to +104°F)