

Project:	
Type:	
Catalog # :	

FME Lighting | 877 - 234 - 8460 | info@fmelighting.com



KEY FEATURES

Voltage	AC120-277V, AC277-480V (50/60Hz)
Wattage	30W, 50W, 75W, 100W, 120W; 150W, 180W, 200W, 240W
Color Temperature	5000K, 2000K, 2200K, 2500K, 2700K, 3000K, 3500K, 4000K, 4500K, 5700K, 6500K

- Warm White / Cool White Options: 2000K - 6500K
- Colored LED available: **R/G/B/AMBER** options
- Amber Light: Wildlife Friendly for coastal areas.
- Ranging from 4,000 to 32,400 Lumens
- Type I, III and V light distribution options
- 1-10V dimmable, DALI control and Bluetooth sensors optional.

The max operating ambient temperature range: **-40°C to 65°C**

50/75/100W	-40°C to +60°C (-40°F to 140°F)
30/120W	-40°C to +65°C (-40°F to 149°F)
150W	-40°C to +55°C (-40°F to 131°F)
180/200/240W	-40°C to +45°C (-40°F to 113°F)

Body Construction	Low-copper aluminum alloy with baked epoxy coating
Components	Stainless steel with anti-corrosive epoxy treatment
Lens Material	Glass

- Anti-corrosion treatment make it suitable for marine environments for over 10 years.
- Swing latch for "hands free" installation and easy access to internal components, and spare parts.
- IP66 and IK08 double protection, 10 to 20kV surge protection.

Dust Protection	Protected from total dust ingress
Water Protection	Protected from high pressure water jets from any direction

- Easy wiring with self-locking spring terminals.
- LED chips are separated from the driver cavity, ensures good heat dissipation and longer service life.

- Mounting: Pendant, Ceiling, Wall, Trunnion, 25° Stanchion, 90° Stanchion and Hook
 - Ceiling, Wall and Trunnion have 4 conduit holes (3/4" NPT entries)



CERTIFICATIONS

- UL 1598 - Wet Locations
 - UL 1598A - Marine
 - UL 8750 - LED Safety
 - UL924 - Emergency Lighting
- NEMA 4X
- CSA C22.2 No. 137
- CSA C22.2 No. 250.0
- CSA C22.2 No. 141

IECEX:

- Ex nR IIC T6/T5 Gc
- Ex tb IIIC T80°C/95°C Db IP66

ATEX:

- Ex nR IIC T6/T5 Gc
- Ex tb IIIC T80°C/95°C Db IP66

APPLICATIONS

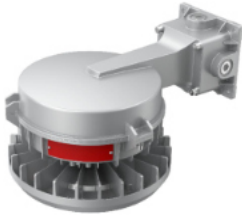
- Power Plants
- Heavy Industrial Storage Facility
- Paper Mills
- Wastewater Treatment Plants
- Loading Docks
- Platforms
- Shipyards

OPTIONS

- Stainless Steel Wire Guard
- Internal Emergency Battery Back Up (50W Only)
- External Battery Backup available (PONCA Series)
- Occupancy Sensor
- Compatible with FME Lighting's external Photocell, Motion Sensor, & Photocell/Sensor combo (SPC Sensor)



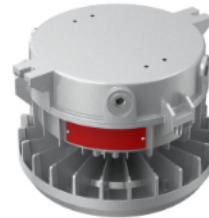
MOUNTING



Wall bracket



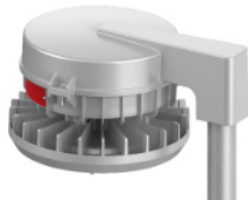
25° Stanchion mount



Ceiling mount



Pendant mount



90° Stanchion mount



Trunnion mount

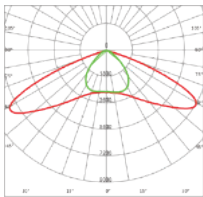


Hook mount

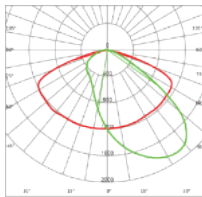

 Custom tenon & poles
 (Example 1 1/4" - 1 1/2" to 4" pole - Contact Factory)
 See Our Poles - [Click here](#)

PHOTOMETRY

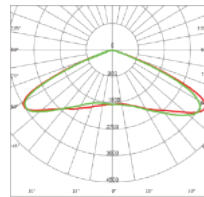
30W-100W Beam Angle



T13801 (type I)

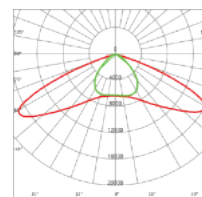


T13803 (type III)

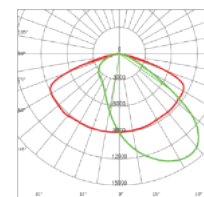


T13803 (type V)

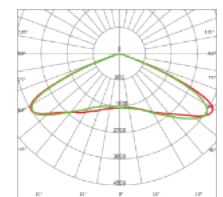
120W-240W Beam Angle



T32001 (type I)



T32003 (type III)



T32005 (type V)

LUMEN OUTPUT CHART

Power Consumption(±5%)	30W	50W	75W	100W	120W	150W	180W	200W	240W
Luminous Flux (±10%)	4050lm	6750lm	10125lm	13500lm	16200lm	20250lm	24300lm	27000lm	32400lm

ORDERING INFORMATION

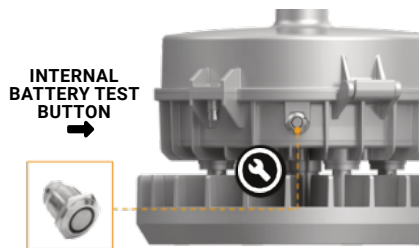
ORDERING GUIDE

Series	Wattage	Voltage	CCT	Optical Lens	CRI	Accessories	Mounting	Warranty	Stock
END	3 = 30W 5* = 50W 7 = 75W 10 = 100W 12 = 120W 15 = 150W 18 = 180W 20 = 200W 24 = 240W	LV = 100-277 VAC HV = 277-480 VAC	U = 2000K T = 3500K R = Red L = 2200K I = 4000K G = Green D = 2500K W = 4500K B = Blue F = 2700K C = 5000K A = Amber S = 3000K K = 5700K H = 6500K	(Please refer to Photometric codes above) TypeI TypeII TypeV	7 = 70 CRI 8 = 80CRI 9 = 90CRI	NPT = 3/4"NPT WG1 = Wire Guard (30-100W) WG2 = Wire Guard (120-240W) EM* = Battery Backup* See our SPC and Ponca Series for external sensors and battery backups!	TR = Trunnion Mount CM = Ceiling Mount PM = Pendant Mount WM = Wall Mount 25S1 = 25° Stanchion (1¼ st) 25S2 = 25° Stanchion (1½ st) 90S1 = 90° Stanchion (1¼ st) 90S2 = 90° Stanchion (1½ st) HK = Hook	5Y = 5 Year (STD) 10Y = 10 Year	S = Stock** Please see note below; stock items are priced separate.

*50W comes in internal battery backup only (100-277V only; EM lumen output is 1,350lm); please see external EM Battery for other wattages for battery backup options.

**We offer some version of this fixture in US stock. Visit the inventory page of our site (Please note the -S at the end of stock part numbers to indicate stock version is needed)

OPTIONS + ACCESSORIES



- Internal Battery Back provides up to 1,350lm for 90 minutes of emergency lighting. (Internal EM battery back up only available for 50W).

- Emergency Test Button built onto the fixture.



- External Battery Backup available (Contact Factory for more Details)

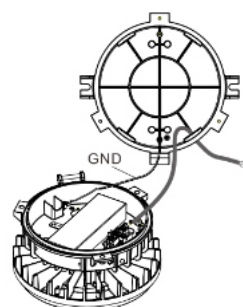


- Compatible with FME Lighting's external Photocell, Motion Sensor, & Photocell/ Sensor combo.

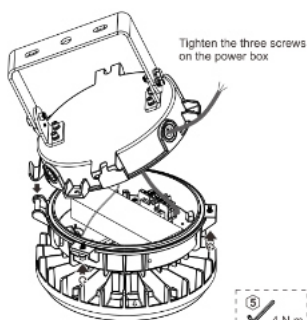
- Remote Control Option

- Rated for Heavy Duty / Non-Hazardous areas.

EASY ACCESS: SWING LATCH

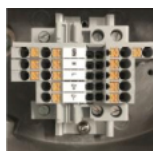


Connect the ground wire on the line to the green wire of the ceiling hood.



Swing latch allows for "hands free" installation and ease of access for replacement parts.

1. Easily install power box first
2. then attach fixture to the swing latch.
3. Connect your power wires and ground.
4. Tighten 3 screws and installation is complete.



Feed Through Wiring:

- Well-organized terminal block, wiring made easy with self-locking spring terminals.
- There is also a surge protection module within the terminal blocks.

100/277V	10kV line-line & line-earth
277/480V	20kv line-line & line-earth

STOCK VERSIONS



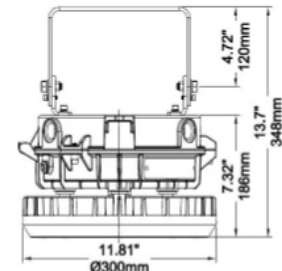
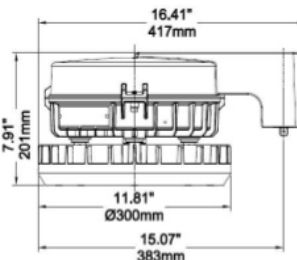
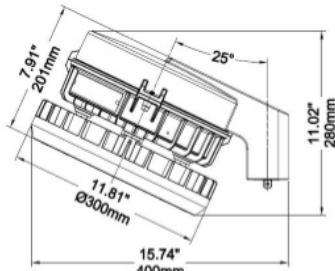
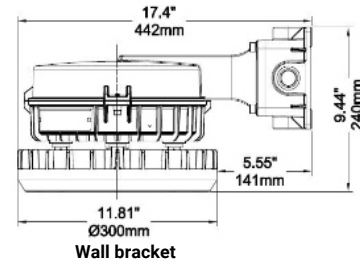
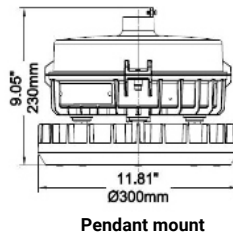
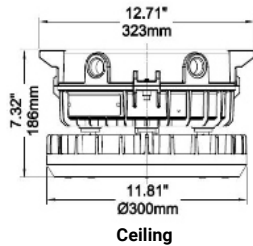
We offer some of our most popular variations of the Nebula in US stock for faster lead times.

Please visit www.fmelighting.com/Inventory.html for the most current offerings.

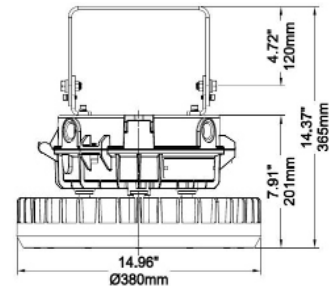
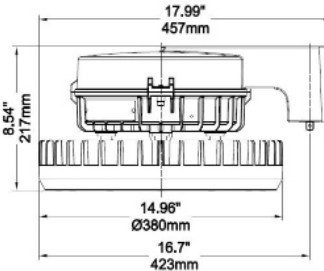
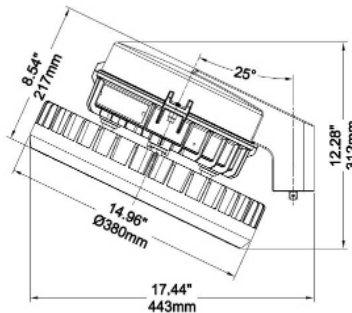
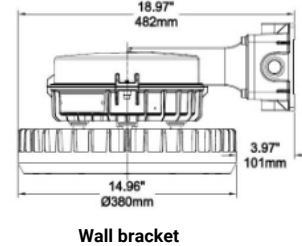
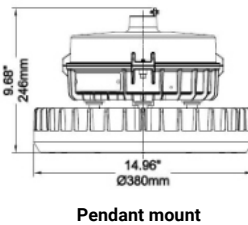
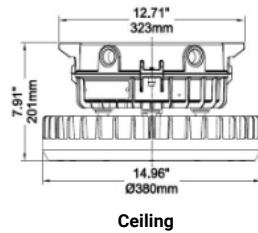
Please note the -S at the end of stock part numbers to indicate stock version is needed

DIMENSIONS Unit: mm (inch)

30W/50W/75W/100W



120W/150W/180W/200W/240W



(30W-100W)

(120W-240W)

Mounting	Product dimension	Export carton size	Luminaire net weight(±0.3kg)	Gross weight (±0.3kg)
Ceiling mount	323x186mm (12.71"x7.32")	360x360x225mm (14.17"x14.17"x8.86")	6.5±0.3kg (14.33±0.66Lbs)	8.0±0.3kg (17.64±0.66Lbs)
Pendant mount	Φ300x230mm (11.81"x9.05")	360x360x260mm (14.17"x14.17"x10.24")	6.1±0.3kg (13.45±0.66Lbs)	7.9±0.3kg (17.42±0.66Lbs)
Trunnion mount	Φ300x348mm (11.81"x13.7")	360x360x300mm (14.17"x14.17"x11.81")	8.1±0.3kg (17.86±0.66Lbs)	9.7±0.3kg (21.38±0.66Lbs)
25° Stanchion mount	400xΦ300x280mm (15.74"x11.81"x11.02")	530x360x240mm (20.86"x14.17"x9.45")	7.6±0.3kg (16.76±0.66Lbs)	9.9±0.3kg (21.83±0.66Lbs)
90° Stanchion mount	417xΦ300x201mm (16.41"x11.81"x7.91")		7.8±0.3kg (17.20±0.66Lbs)	10.1±0.3kg (22.27±0.66Lbs)
Wall bracket	Φ300x442mm (11.81"x17.4")	530x360x275mm (20.86"x14.17"x10.83")	8.5±0.3kg (18.74±0.66Lbs)	11.0±0.3kg (24.25±0.66Lbs)

Mounting	Product dimension	Export carton size	Luminaire net weight(±0.3kg)	Gross weight (±0.3kg)
Ceiling mount	Φ380x201mm (14.96"x7.91")	470x470x240mm (18.50"x18.50"x9.45")	9.7±0.3kg (21.38±0.66Lbs)	12.2±0.3kg (26.90±0.66Lbs)
Pendant mount	Φ380x246mm (14.96"x9.68")	470x470x275mm (18.50"x18.50"x10.83")	9.4±0.3kg (20.72±0.66Lbs)	12.0±0.3kg (26.46±0.66Lbs)
Trunnion mount	Φ380x365mm (14.96"x14.37")	470x470x320mm (18.50"x18.50"x12.60")	11.3±0.3kg (24.91±0.66Lbs)	14.1±0.3kg (31.09±0.66Lbs)
25° Stanchion mount	443xΦ380x312mm (17.44"x14.96"x12.28")	570x460x255mm (22.44"x18.11"x10.04")	10.8±0.3kg (23.80±0.66Lbs)	13.8±0.3kg (30.42±0.66Lbs)
90° Stanchion mount	457xΦ380x217mm (17.99"x14.96"x8.54")		11.1±0.3kg (24.47±0.66Lbs)	14.0±0.3kg (30.86±0.66Lbs)
Wall bracket	482xΦ380x256mm (18.97"x14.96"x10.08")	570x460x290mm (22.44"x18.11"x11.42")	11.7±0.3kg (25.79±0.66Lbs)	15.3±0.3kg (33.73±0.66Lbs)