



# SolarGlowLED Solar Street Light

All-in-one full series integrated solar street light



200lm/W



Built-in  
high conversion rate



30-100W



Up to 21%  
high conversion rate

# Development Purpose-1

Follow the Carbon Neutrality by 2050: the world's most urgent mission.

The European Union has committed to do so. The United Kingdom, Japan, the Republic of Korea and more than 110 countries have done the same. So, too, has the incoming United States administration. China has pledged to get there before 2060.

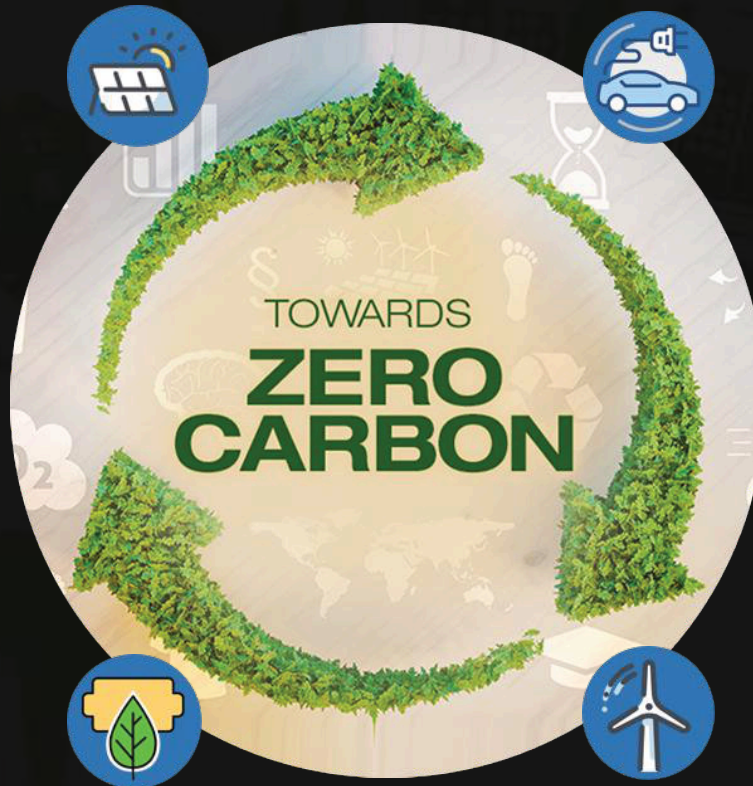
Solar Power



Recharge able Electric Vehicle



Recyclable Battery



Wind Power



# Development Purpose-2

Bring you a concise and full series solar street light without mess.



Easy to install

## Integrated Solar Street Light

- Simple all-in-one design
- Fast installation
- Low shipping cost



VS

## Traditional solar street light+external solar panel

- Complicated structure
- High installation cost
- High shipping cost



# Features

Modular Lens design

Multiple wattage fit for different projects

100W

60W/80W

40W/50W

30W

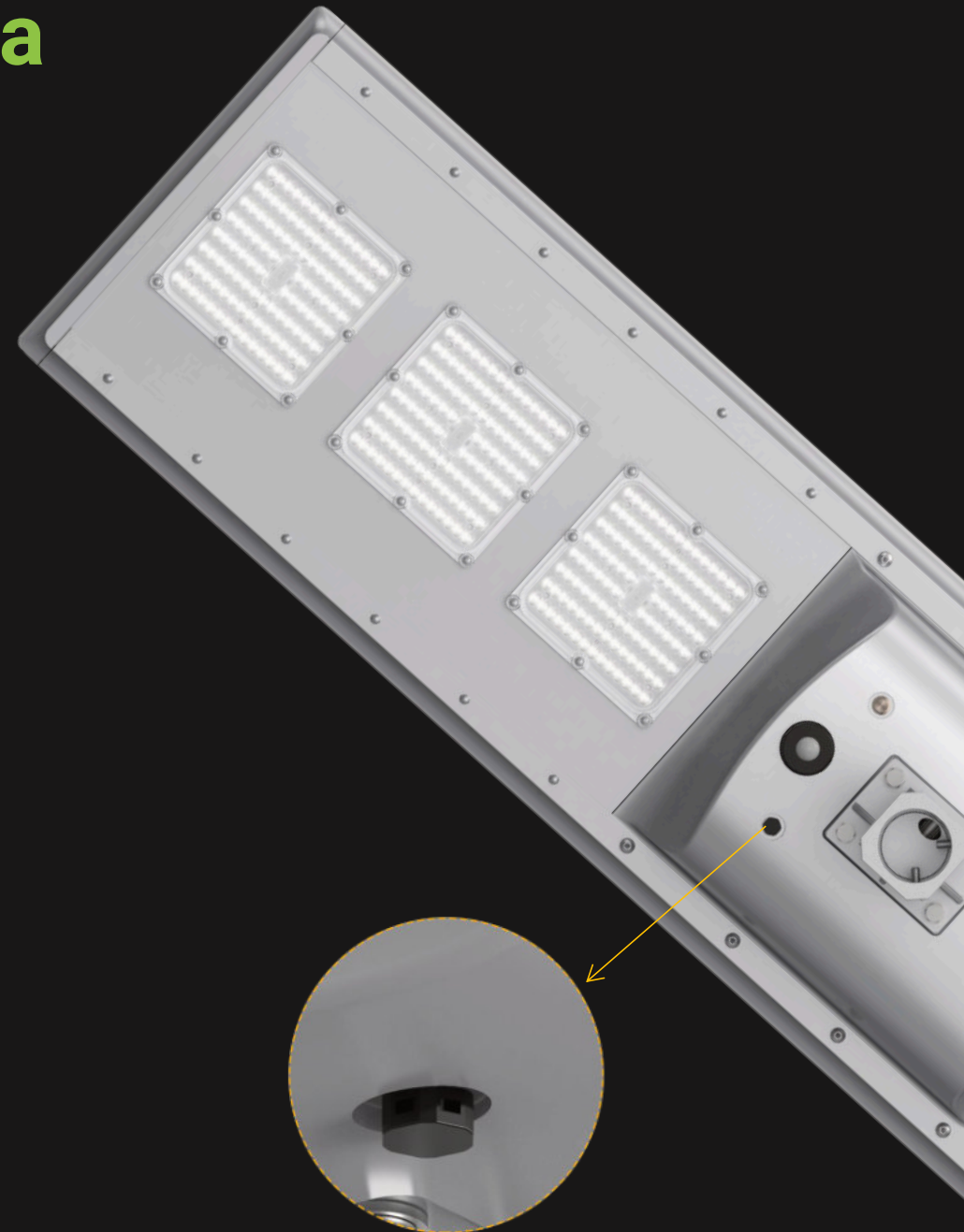
# Mono-crystalline photo-voltaic with a higher conversion efficiency



Battery and controller inside the fixture, easier to transport and install. Ours solar street light adopts LiFePO4 battery, high temperature resistance, large current discharge, life cycle more than **2000 times**

With **21%** conversion rate mono-crystalline solar panel, the panel could help store more energy in rainy day, lifespan is much longer and lighting output performance is better.

LiFePO4 Battery, with longer lifetime, charge for 8 hours which can continuous work for **3** days



# High Efficiency Up To 200lm/w

Ultra powerful from 6,000lm to 20,000lm

## STREETLIGHT PHOTOMETRIC TEST REPORT

Test:U:32.82V I:1.7999A P:59.07W PF:1.0000 Freq:0Hz UTHDi:0.00% ITHDi:0.00% KDisp:0  
Lamp Flux:11941.8x1 lm

NAME: ST50-060-4070-R10801	TYPE:	WEIGHT:
SPEC.:	DIM.:	SERIAL No.:
MFR.:	SUR.:	Shielding Angle:

DATA OF LAMP		PHOTOMETRIC DATA				Eff: 202.17 lm/W
MODEL	/	I <sub>max</sub> (cd)	6858	η street_up (%)	0.0	
NOMINAL POWER (W)	/	LOR (%)	100.0	η street_down (%)	71.0	
RATED VOLTAGE (V)	/	TOTAL FLUX (lm)	11942	η house_up (%)	0.0	
NOMINAL FLUX (lm)	11941.8	MAXIMUM @ (C, γ )	165,67.5	η house_down (%)	29.0	
LAMPS INSIDE	1	η up (%)	0.0	76 FLASHAREA (m2)		
TEST VOLTAGE (V)	/	η down (%)	100.0	SLI		

# DIY Friendly

DIY friendly with large space to fit different capacity of batteries



Detachable LiFePO4 battery  
Easy for maintenance.

# Flexible Installation

80°



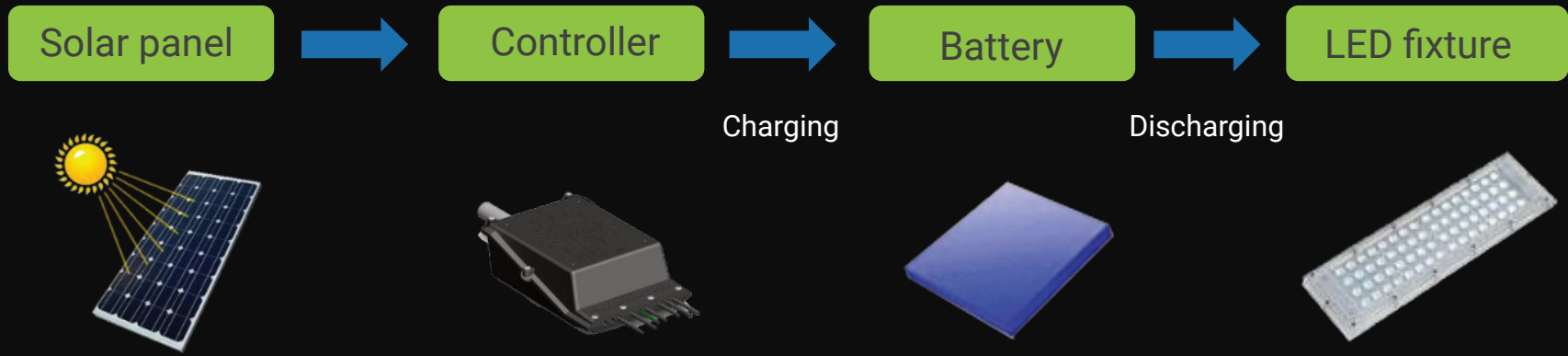
±80° adjustable angle, more flexible.  
Make your installation easier.



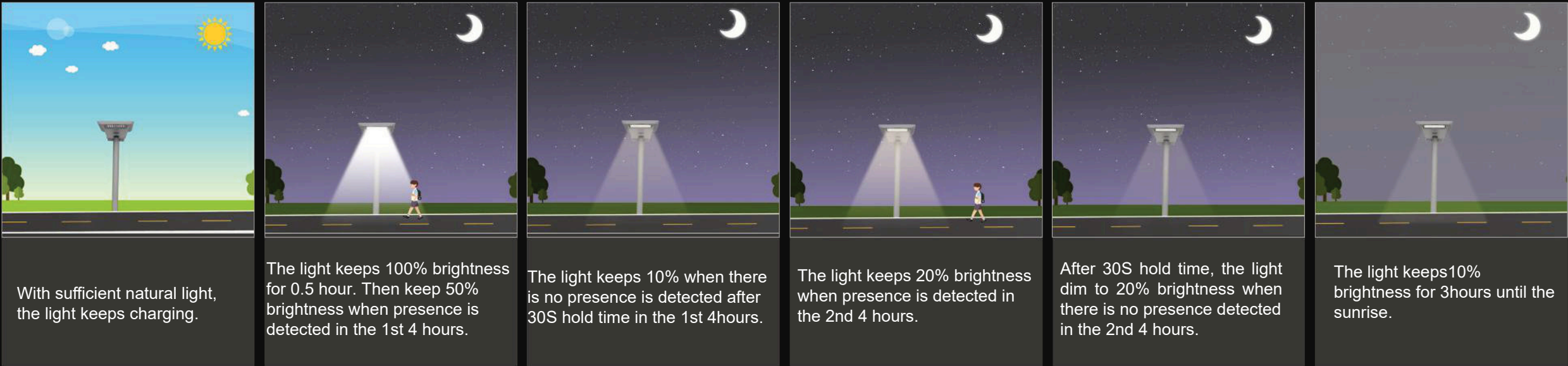
To get more effective sunshine easily



# Intelligent Control



## Factory Default Setting:



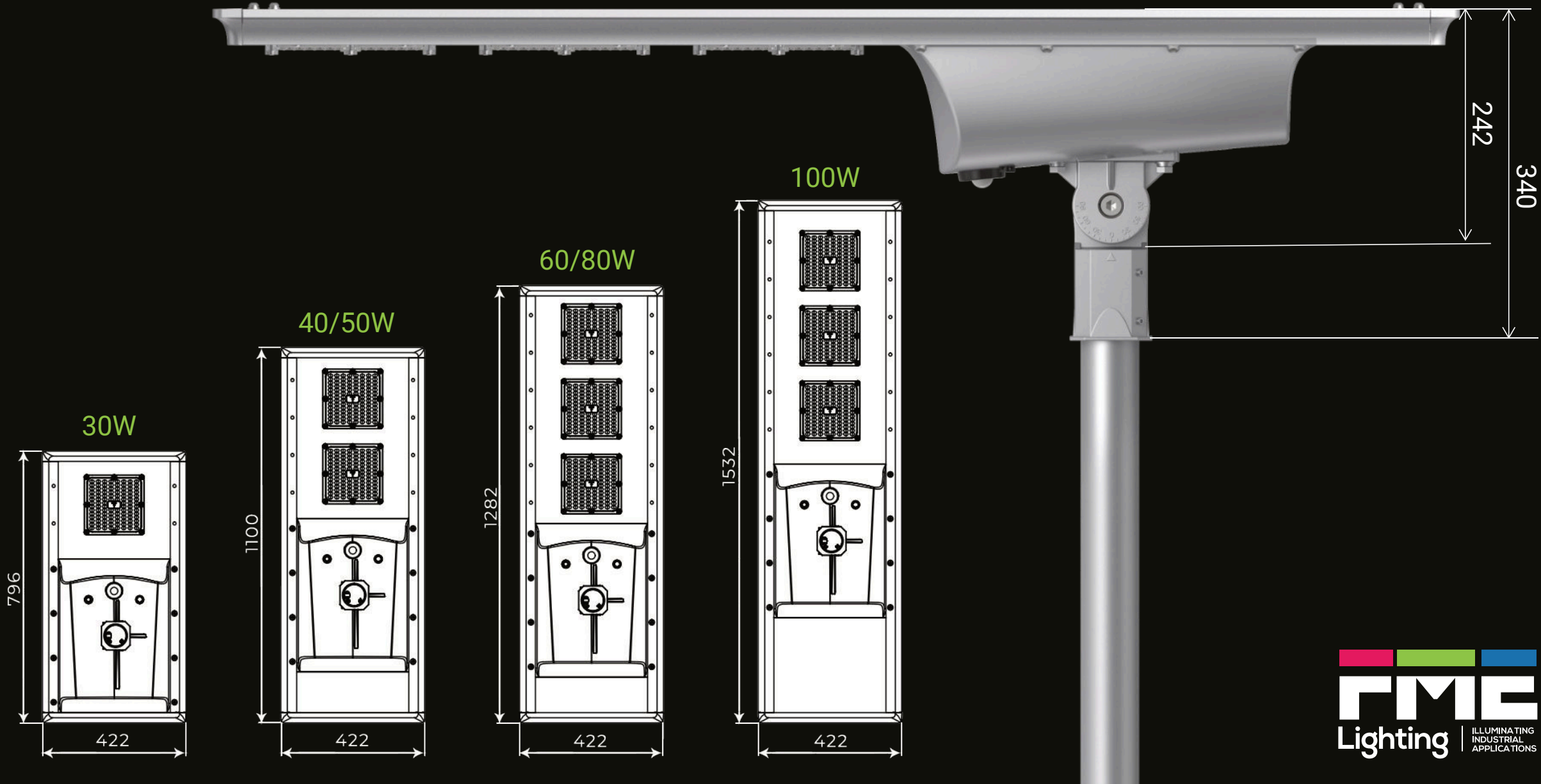
The controller recognizes day and night based on the solar array open circuit voltage; this day/night threshold can be modified according to local light conditions and the solar array used; setting range 3.0~8.0V.

# Specification



SPECIFICATION	6,000LM	8,000LM	10,000LM	12,000LM	16,000LM	20,000LM
MODEL	SGL-030	SGL-040	SGL-050	SGL-060	SGL-080	SGL-100
WATTAGE	30w	40w	50w	60w	80w	100w
COLOR TEMP	4000K (3000K, 5000K optional)					
EFFICIENCY	200 LM/W					
OPTIC	Type II Medium					
LED CHIP	SMD 2835 LED chips					
BATTERY	LiFePO4 - 18Ah 12.8V(230Wh )	LiFePO4 - 24Ah 12.8V (307Wh)	LiFePO4 - 30Ah 12.8V (384Wh)	LiFePO4 - 36Ah 12.8V (460Wh)	LiFePO4 -48Ah 12.8V (614Wh)	LiFePO4 - 30/36Ah 25.6V (768/912Wh)
Controller	18PWM/MPPT					
SOLAR PANEL TYPE	Monocrystalline					
CHARGING TIME	>9 hrs					
AUTONOMY	Full power>8 hours, Intelligent mode 3-4 days					
IP RATING	IP65					
OPERATION MODE	Remote control with one-key setting					
CONTROL	Timer dimming/PIR sensor					
INSTALLATION HEIGHT	3-7m, Post Top					
OPERATING TEMPERATURE	0°C~50°C					

# Dimensions



# Reliability Tests



Dust test



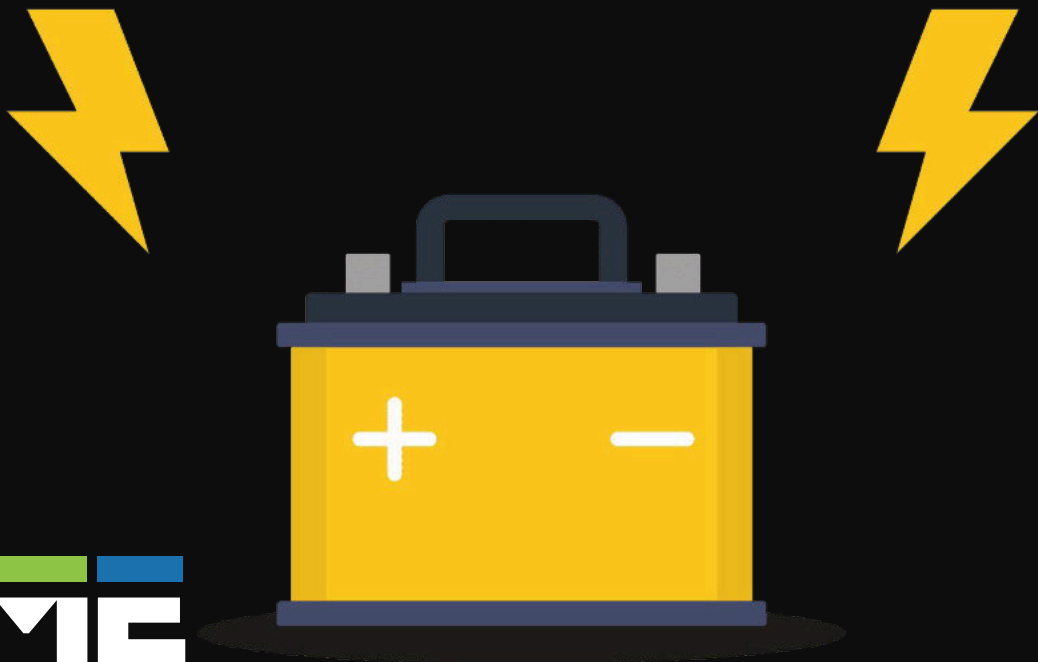
IP65



Loading test

# Discharge time test

Test the full discharge time  
after the battery is fully charged



Model	Ambient temperature	Discharge duration
ST50-030	0°C	6.9H
	25°C	7.3H
ST50-040	0°C	6.8H
	25°C	7.3H
ST50-050	0°C	6.8H
	25°C	7.3H
ST50-060	0°C	6.8H
	25°C	7.2H
ST50-080	0°C	6.7H
	25°C	6.9H
ST50-100	0°C	6.8H
	25°C	7.7H

# Applications

