

# ASM SERIES Marine Rated Flood Light



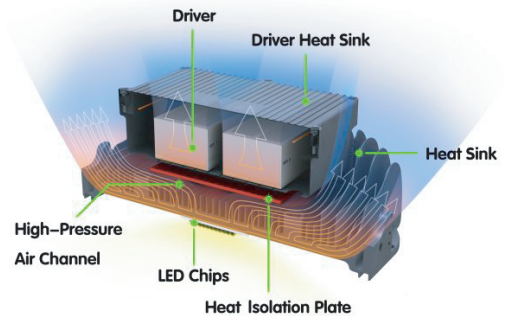
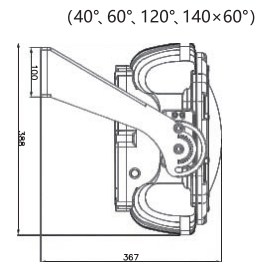
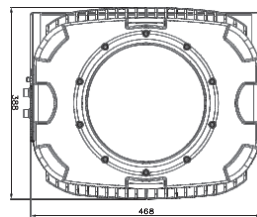
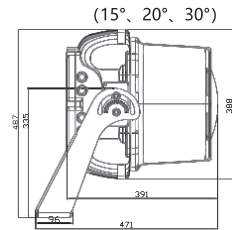
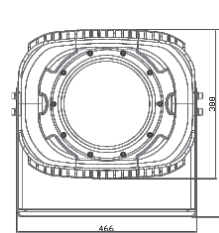
Project:	
Type:	
Catalog #:	



- New powerful LED light released, ultra solution for professional applications
- Flood, Street, Wall mount bracket for option with flexible installation
- Cree chips high efficacy 130lm/w±7% with meanwell driver

## FEATURES

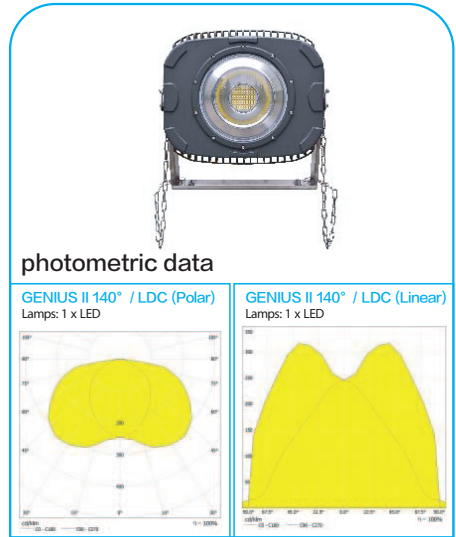
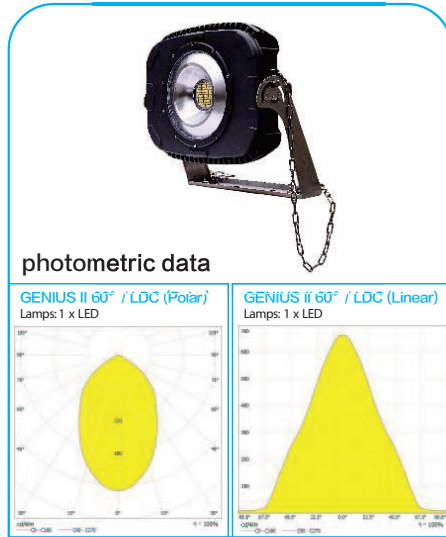
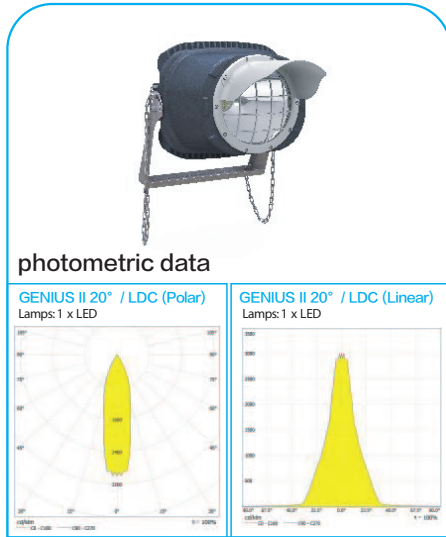
- 80% lumen maintenance over 50,000hours
- 110-480Vac input voltage without additional adapter
- 0-10VDC, DALI and wireless control available
- Photocell & motion sensor system available
- Built-in surge protection & thermal protection
- Maintenance free
- Mercury free, No UV or IR
- High uniformity & color rendering index



# ASM SERIES Marine Rated Flood Light



Project:	
Type:	
Catalog #:	



## RAZORLUX Genius II LED Light Specifications

Model	ASM-200A	ASM-300A	ASM-400A	ASM-500A	ASM-600A	AS-700A	ASM-200P	ASM-300P	ASM-400P	ASM-500P	ASM-600P	ASM-700P	
Power Consumption	LEDs	180W	270W	360W	450W	540W	630W	180W	270W	360W	450W	540W	630W
	Driver	20W	30W	40W	50W	60W	70W	20W	30W	40W	50W	60W	70W
	Total	200W	300W	400W	500W	600W	700W	200W	300W	400W	500W	600W	700W
Initial Lumen Flux	26000 lm	39000 lm	52000 lm	65000 lm	78000 lm	91000 lm	24000 lm	36000 lm	48000 lm	60000 lm	72000 lm	84000 lm	
Replace HID Lamp	400-600W	600-800W	800-1000W	1000-1200W	1200-1500W	1500-1800W	400-600W	600-800W	800-1000W	1000-1200W	1200-1500W	1500-1800W	
Net Weight	15kg (33lbs)						19kg (42lbs) AS						
Beam Angle	40° 60° 120° 140°						15° 20° 30°						
Color Temperature	2700-6500K												
Color Rendering	≥Ra75												
Working Life	≥50000Hrs												
Housing	Aluminum & Powder coating												
IP Class	IP67												
Power Supply	Meanwell												
Working Temperature	-40C~-60C/40F~-140F												
AC Input	80~315Vac, (347Vac available on request)												
Power Factor	≥0.98												
Warranty	5 Years												

# ASM SERIES Marine Rated Flood Light

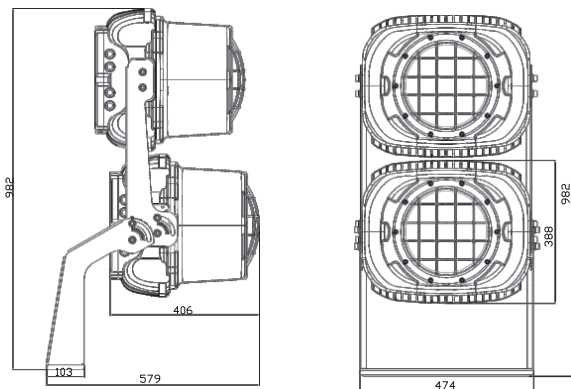
Project:	
Type:	
Catalog #:	



- New powerful LED light released, ultra solution for professional applications
- 800W to 1400W double Genius Model with flexible installation
- Flexible and reliable stainless steel mounting system

## FEATURES

- ◆ 80% lumen maintenance over 50,000hours
- ◆ 110-480Vac input voltage without additional adapter
- ◆ 0-10VDC, DALI and wireless control available
- ◆ Photocell & motion sensor system available
- ◆ Built-in surge protection & thermal protection
- ◆ Mercury free, No UV or IR
- ◆ High uniformity & color rendering index



# ASM SERIES Marine Rated Flood Light

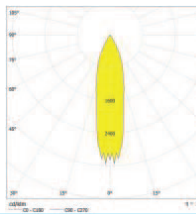


Project:	
Type:	
Catalog #:	

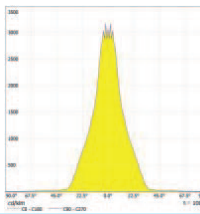


photometric data

GENIUS II 15° / LDC (Polar)  
Lamps: 1 x LED

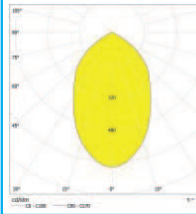


GENIUS II 15° / LDC (Linear)  
Lamps: 1 x LED

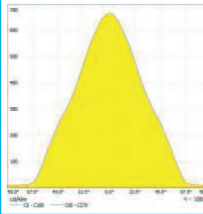


photometric data

GENIUS II 60° / LDC (Polar)  
Lamps: 1 x LED

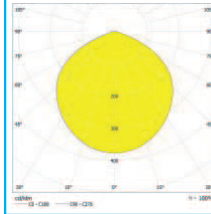


GENIUS II 60° / LDC (Linear)  
Lamps: 1 x LED

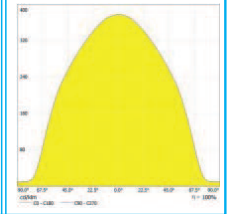


photometric data

GENIUS II 120° / LDC (Polar)  
Lamps: 1 x LED



GENIUS II 120° / LDC (Linear)  
Lamps: 1 x LED



## ASM SERIES Light Specifications

Model		ASM-800A	ASM-1000A	ASM-1200A	ASM-1400A	ASM-800P	ASM-1000P	ASM-1200P	ASM-1400P
Power Consumption	LEDs	720W	900W	1080W	1260W	720W	900W	1080W	1260W
	Driver	80W	100W	120W	140W	80W	100W	120W	140W
	Total	800W	1000W	1200W	1400W	800W	1000W	1200W	1400W
Initial Lumen Flux		104 000lm	130000lm	156 000lm	182 000lm	96000lm	120000lm	144 000lm	168 000lm
Replace HID Lamp		1800~2200W	2200~2500W	2500~3000W	3000~3500W	1800~2200W	2200~2500W	2500~3000W	3000~3500W
Net Weight		30kg (66lbs)				38kg (84lbs)			
Beam Angle		40° 60° 120° 140°				15° 20° 30°			
Color Temperature		2700-6500K							
Color Rendering		≥Ra75							
Working Life		≥50000Hrs							
Housing		Aluminum & Powder coating							
IP Class		IP67							
Power Supply		Meanwell							
Working Temperature		-40C~60C/40F~140F							
AC Input		80~315Vac, (347Vac available on request)							
Power Factor		≥0.98							
Warranty		5 Years							