

Overview

- ✓ Simplistic and charming design, less is more
- ✓ Can be used as high bay light, flood light or tunnel light
- ✓ Suitable for indoor and outdoor warehouse, stadium, tunnel, etc
- ✓ Luminous efficacy up to 170lm/w, lifespan up to 54,000+ hours

5 Year Warranty for the Entire Luminaire!!!

Reliable LED Lighting Technology

The special CDM Reliable LED Lighting Technology provides significant advantages in terms of luminous efficiency, minimising losses refraction and reflection inside the optical system. This system ensures a lower density of dirt and maintaining the luminaire performance for a very long period.

Protect the LED Source

As the key to guarantee the total life span of the luminaire, the protection of the LED source is the core topic in the designing of CDM luminaire. The carefully selected Mitsubishi PC cover and waterproof rubber ring ensured the total IP of the whole product. And it also protect the LED chip from the external agents and impact.

Temperature Control

CDM i Series is designed with superb heat radiation technique. The heat and air can go through the whole luminaire via the gaps between the modules. This product also has a self-clean ability. When the rain came, the fixture will be washed and the dirt automatically goes out.

By the excellent heat radiation ability, **the temperature rising of i series high bay / flood light is only <26 °C**. And the lamp can work in the environment from -40 °C to 50 °C. If the environment is 40 °C, the maximize temperature on the lamp is 66 °C. But the Lumileds Luxeon 5050 / 3030 chips can afford 110 °C. This ensures the long life span and performance of the whole luminaire.



Multifunction Applications

The i Series was designed to fit many different applications like high/low bay lighting, flood lighting, high mast lighting and tunnel lighting. In specific, it can use in warehouse, indoor and outdoor sports stadium, high mast application, tunnel, and many more.



Airport Hanger Lighting Project in USA with CDM-200Wi



Gantry Crane Lighting Project in USA with CDM-160W

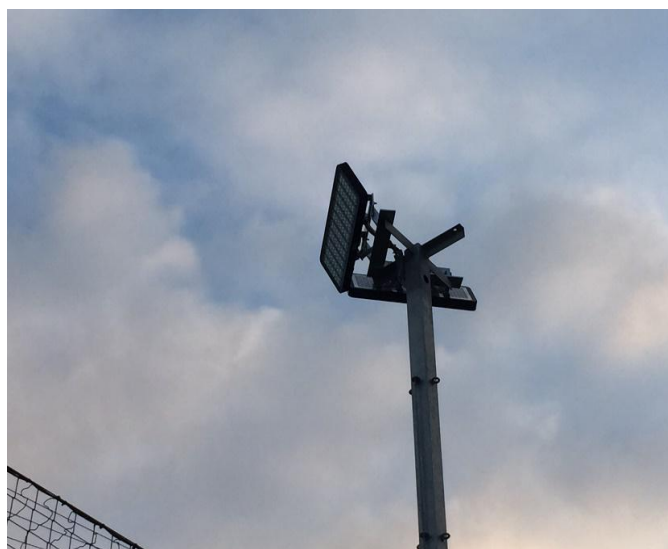


Project Demonstrations of i Series



Tennis court in Los Angeles

Office in United States



400Wi Project for Football Stadium in Australia

Project Demonstrations of i Series



Indoor Tennis Court
in Poland

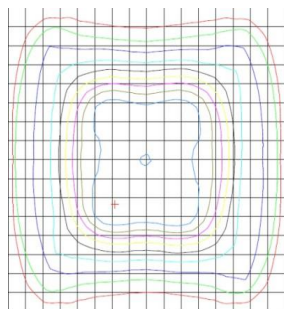
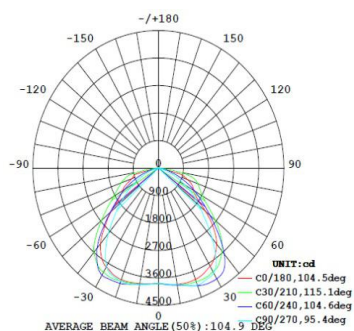


Fire Station in United States

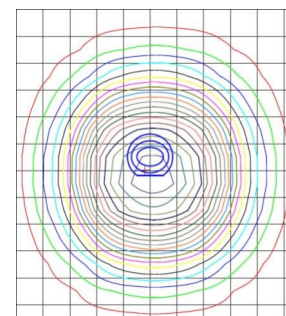
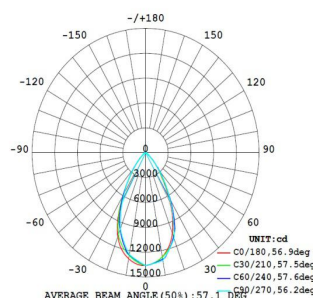
Multiple Light Distribution Options

The i Series has 4 main lens options: the 90°*100 degrees, 60 degrees and 120 degrees. 90°*100 lens is the most common one, suitable for tunnel lighting and many areas like warehouse, countryyard, etc, the installation height is between 20-30 feet. The 60 degrees lens is suitable for the large area with 40-60 feet installation height, the light is more concentrate than the 90°*100 one. And the 120 degrees suitable for low installation height like 18 feet. This lens brings the best evenness. Last but not least, CDM also offers 30°*60° lens for 3030-2D chips and 30° for 5050 chips.

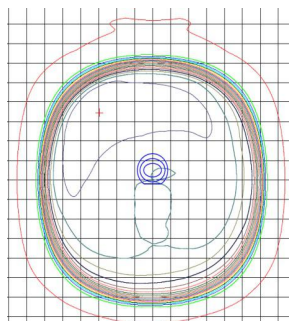
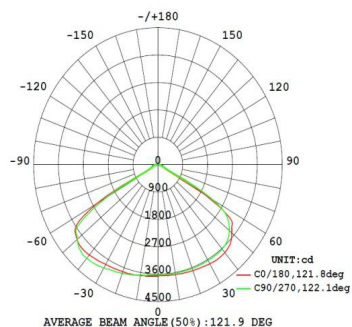
90°*100 degrees



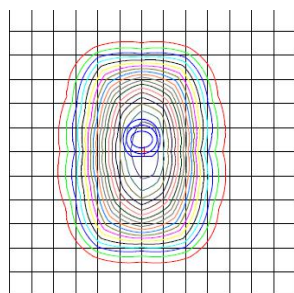
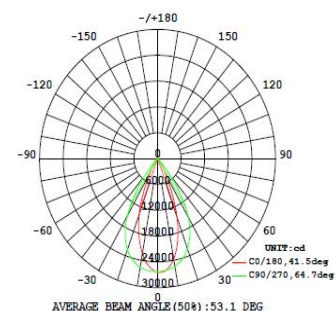
60 degrees



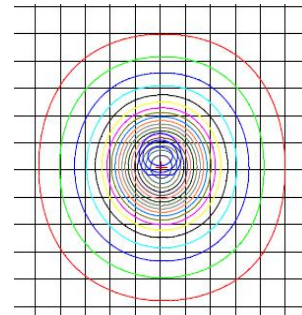
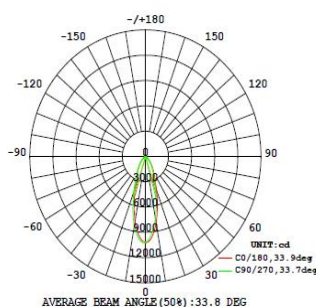
120 degrees



30°*60 degrees for 3030-2D Chips



30 degrees for 5050 Chips



CDM-120Wi-XX(D)

LED High Bay / Flood / Tunnel Light, 400W MHL Replacement



Optical control function optional

Dimming functions optional

+Three in One (1-10V DC / PWM / Resistance)

+Timer - Contact FME for Details

Specifications

Electrical Specifications

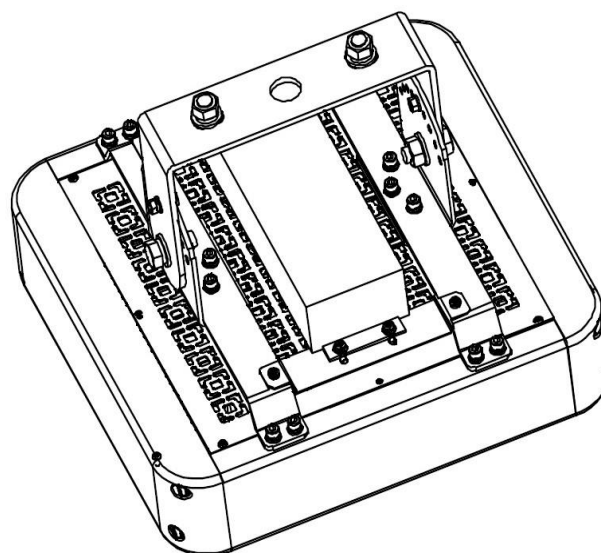
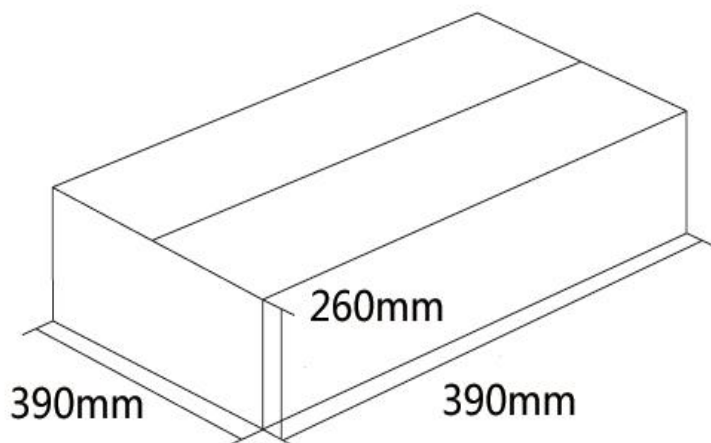
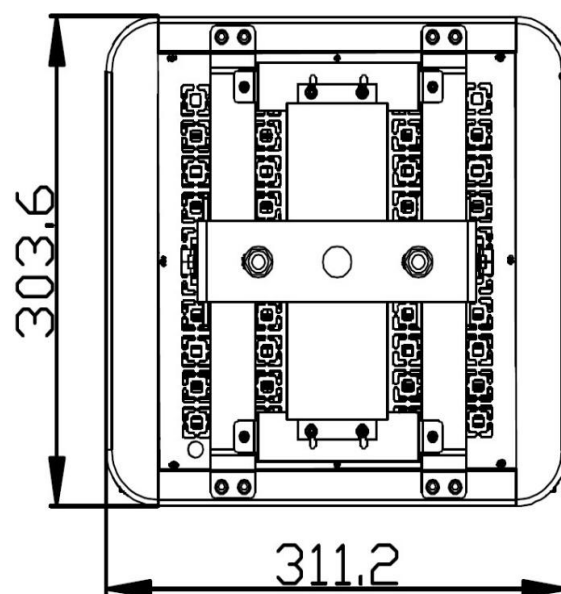
Model No.	CDM-120Wi-XX(D) 120W
Nominal Wattage	100-240/277VAC, 50/60Hz
Nominal Voltage	AC 1.35A (max)
Maximum Current	Inventronics EUG
Driver	>0.95
Power Factor (PF)	>92%
Driver Efficiency	Yes
Dimmable	

Photometric Specifications

Luminous Flux	+Lumen tolerance +/- 5%
	19,200-20,400lm
CRI	Ra>78
Chips	Lumileds 5050
CCT	3000K/4000K/5000K/5700K
Optional Beam Angle	30°/60°/90°/100°/120°

Mechanical Specifications

IP Rating	IP66
Lifetime	62000 hours - L70, @25°C
Heat Radiator	Anodized Aluminum
Lens	PC
Fixture Dimension	304*311*196mm
	11.9*12.2*7.7 inches
Net Weight	6.2kg
Carton Dimension	390*390*260mm
Gross Weight	7.8kg



CDM-200Wi-(D)-X

LED High Bay / Flood / Tunnel Light, 600-800W MHL Replacement



Optical control function optional

Dimming functions optional

+Three in One (1-10V DC / PWM / Resistance)

+Timer - Contact FME for Details

Specifications

Electrical Specifications

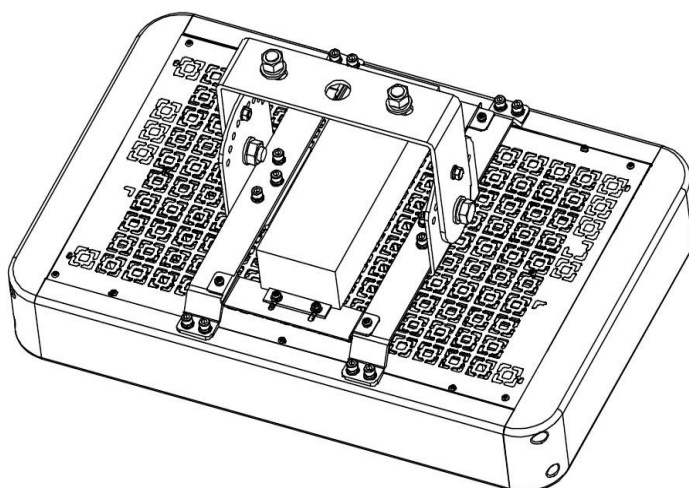
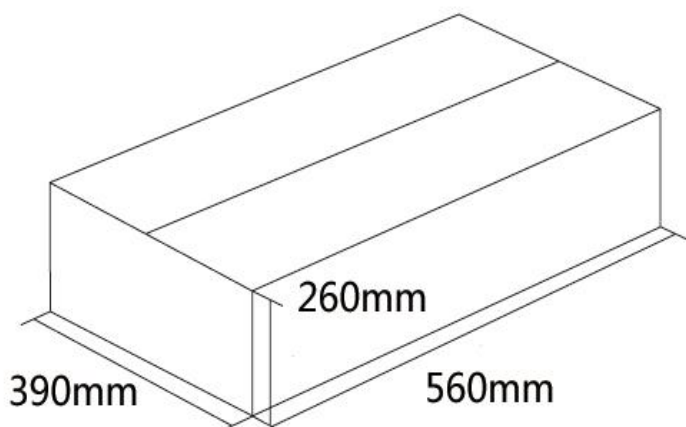
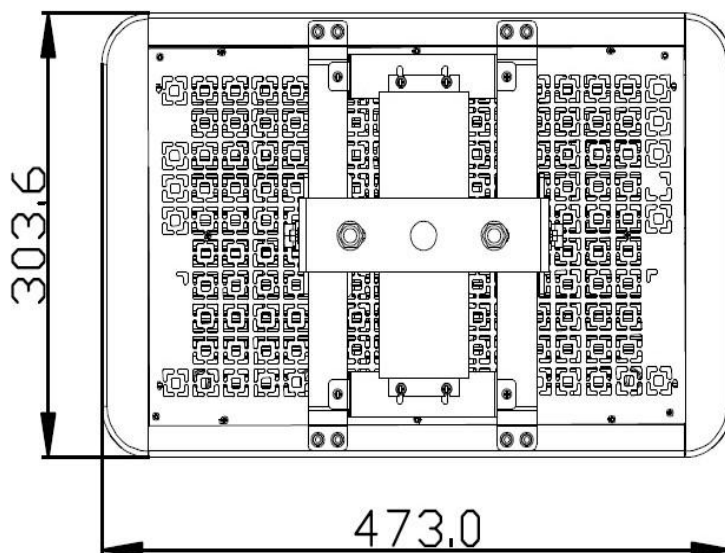
Model No.	CDM-200Wi-XX(D) 200W
Nominal Wattage	100-240/277VAC, 50/60Hz
Nominal Voltage	AC 2.25A (max)
Maximum Current	Inventronics EUG
Driver	>0.95
Power Factor (PF)	>92%
Driver Efficiency	Yes
Dimmable	

Photometric Specifications

Luminous Flux	+Lumen tolerance +/- 5% 32,000-34,000lm
CRI	Ra>78
Chips	Lumileds 5050
CCT	3000K/4000K/5000K/5700K
Optional Beam Angle	30°/60°/90°/100°/120°

Mechanical Specifications

IP Rating	IP66
Lifetime	54000 hours - L70, @25°C
Heat Radiator	Anodized Aluminum
Lens	PC
Fixture Dimension	304*473*196mm 11.9*18.6*7.7 inches
Net Weight	8.6kg
Carton Dimension	560*390*260mm
Gross Weight	10.6kg



CDM-360Wi-HV(D)-X

LED High Bay / Flood / High Mast Light, 1000W HID Replacement



Optical control function optional

Dimming functions optional

+Three in One (1-10V DC / PWM / Resistance)

+Timer - Contact FME for Details

Specifications

Electrical Specifications

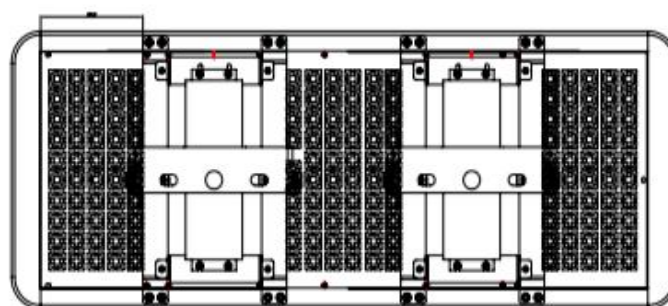
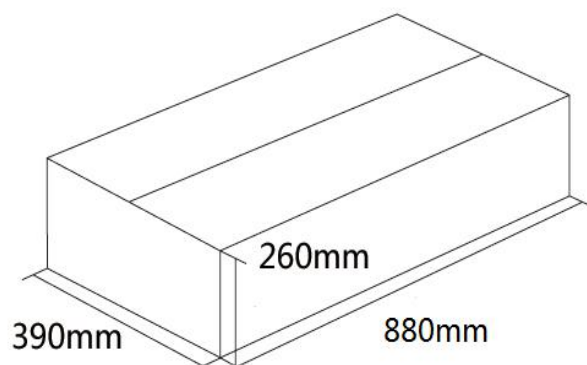
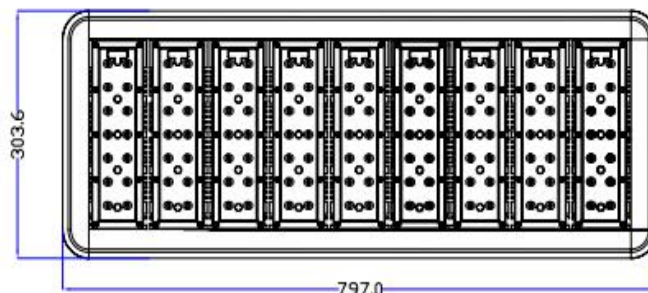
Model No.	CDM-360Wi-XX-HV
Nominal Wattage	360W
Nominal Voltage	347-480VAC, 50/60Hz
Maximum Current	AC 1.05A (max)
Driver	Meanwell HVG
Power Factor (PF)	>0.95
Driver Efficiency	>92%
Dimmable	No

Photometric Specifications

Luminous Flux	+Lumen tolerance +/- 5% 57,600-61,200lm
CRI	Ra>78
Chips	Lumileds 5050
CCT	3000K/4000K/5000K/5700K
Optional Beam Angle	30°/60°/90°/100°/120°

Mechanical Specifications

IP Rating	IP65
Lifetime	54000 hours - L70, @25°C
Heat Radiator	Anodized Aluminum
Lens	PC
Fixture Dimension	304*835*196mm 11.9*32.9*7.7 inches
Net Weight	16.5kg
Carton Dimension	880*390*260mm
Gross Weight	18.0kg



CDM-400Wi

LED High Bay / Flood / Tunnel Light, 1000-1500W MHL Replacement



Optical control function optional
 Dimming functions optional
 +Three in One (1-10V DC / PWM / Resistance)
 +Timer - Contact FME for Details

Specifications

Electrical Specifications

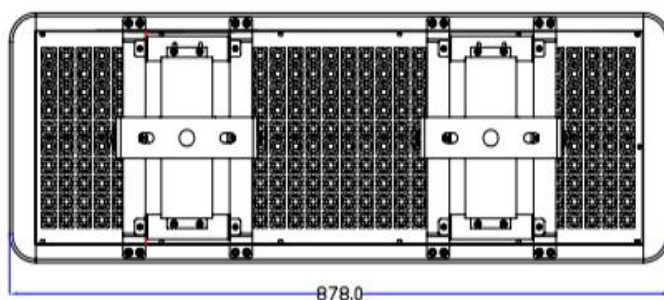
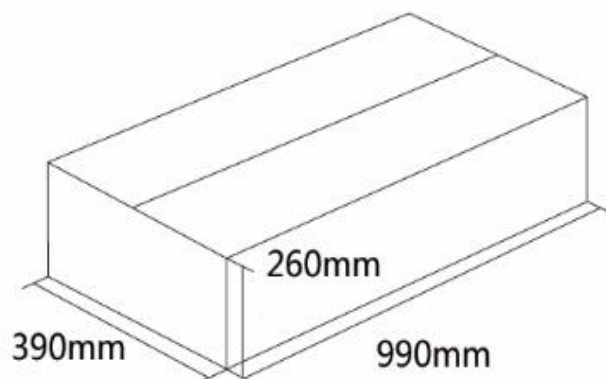
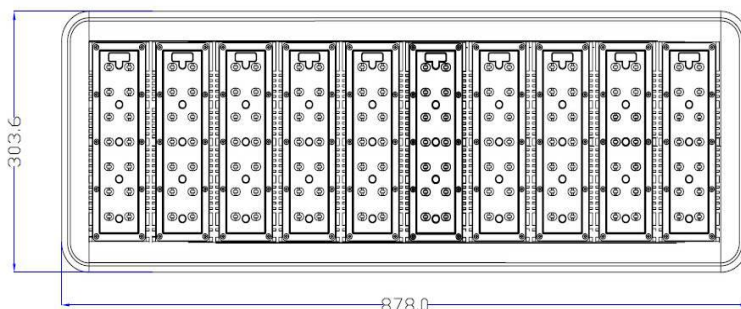
Model No.	CDM-400Wi
Nominal Wattage	400W
Nominal Voltage	347-480Vac, 50/60Hz
Maximum Current	AC 1.15A (max)
Driver	Meanwell HVG
Power Factor (PF)	>0.95
Driver Efficiency	>92%
Dimmable	Yes

Photometric Specifications

Luminous Flux	+Lumen tolerance +/- 5%
	44,000lm
CRI	Ra>78
Chips	Lumileds Luxeon T
CCT	3000K/4000K/5000K/5700K
Optional Beam Angle	/60°/90°/100°/120°

Mechanical Specifications

IP Rating	IP66
Lifetime	54000 hours - L70, @25°C
Heat Radiator	Anodized Aluminum
Lens	PC
Fixture Dimension	304*878*196mm 11.9*35*7.7 inches
Net Weight	18.5kg
Carton Dimension	990*390*260mm
Gross Weight	19.5kg



CDM-80Wi(D)-X(*)

LED High Bay / Flood / Tunnel Light, 150W HPS Replacement

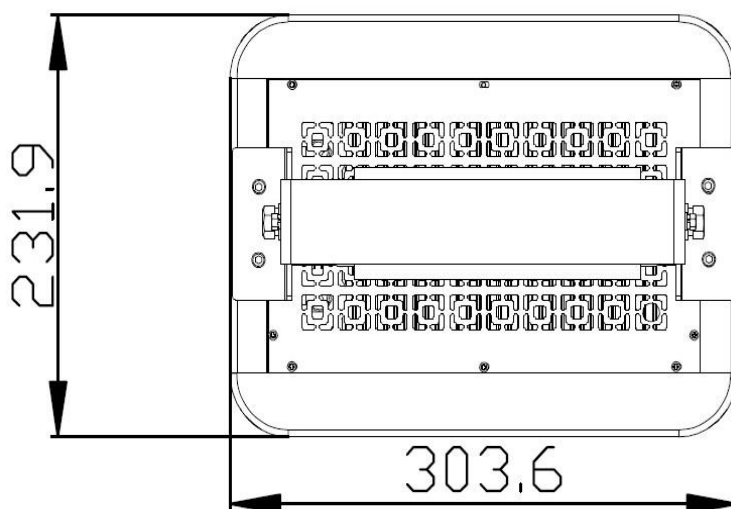


Optical control function optional

Dimming functions optional

+Three in One (1-10V DC / PWM / Resistance)

+Timer - Contact FME for Details



Specifications

Electrical Specifications

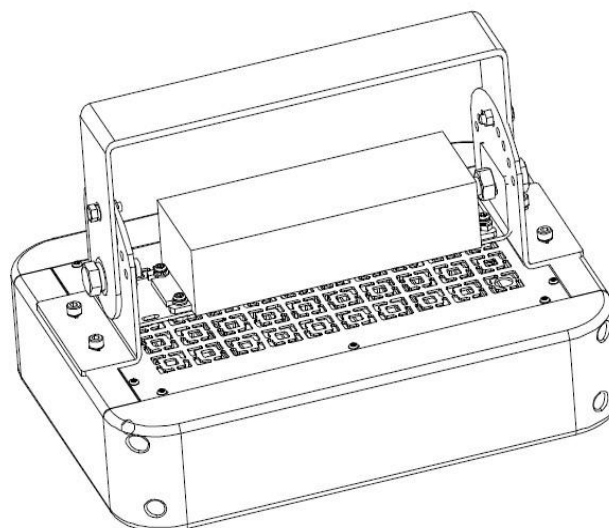
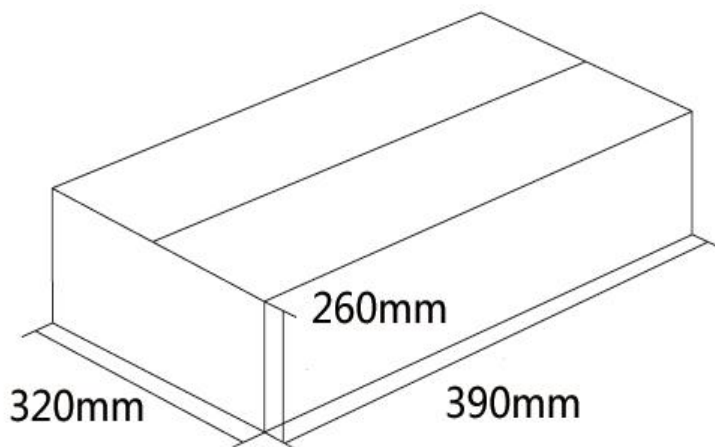
Model No.	CDM-80Wi(D)-X(*)
Nominal Wattage	80W
Nominal Voltage	100-240/277VAC, 50/60Hz
Maximum Current	AC 0.9A (max)
Driver	Meanwell HLG
Power Factor (PF)	>0.95
Driver Efficiency	>92%
Dimmable	Yes

Photometric Specifications

Luminous Flux	+Lumen tolerance +/- 5%
	9,600-10,400lm
CRI	Ra>78
Chips	Lumileds 3030-2D
CCT	3000K/4000K/5000K/5700K/6500K
Optional Beam Angle	60°/90°/100°/120°/30°/60°

Mechanical Specifications

IP Rating	IP66
Lifetime	54000 hours - L70, @25°C
Heat Radiator	Anodized Aluminum
Lens	PC
Fixture Dimension	304*232*183mm
	11.9*9.1*7.2 inches
Net Weight	4.8kg
Carton Dimension	390*320*260mm
Gross Weight	6.2kg



CDM-360Wi

LED High Bay / Flood / Tunnel Light, 1000W HID Replacement

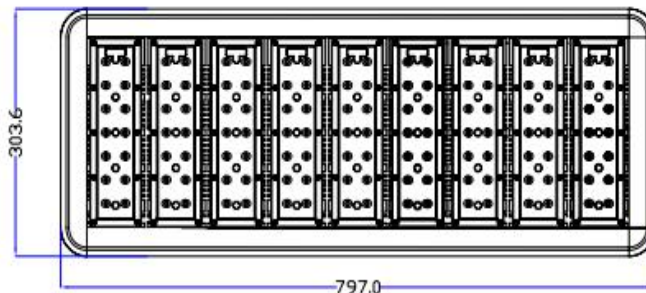


Optical control function optional

Dimming functions optional

+Three in One (1-10V DC / PWM / Resistance)

+Timer - Contact FME for Details



Specifications

Electrical Specifications

Model No.	CDM-360Wi
Nominal Wattage	320W
Nominal Voltage	100-240/277VAC, 50/60Hz
Maximum Current	AC 4.0A (max)
Driver	Meanwell HLG
Power Factor (PF)	>0.95
Driver Efficiency	>92%
Dimmable	No

Photometric Specifications

Luminous Flux	+Lumen tolerance +/- 5% 43,200-46,800lm
CRI	Ra>78
Chips	Lumileds 3030-2D
CCT	3000K/4000K/5000K/5700K/6500K
Optional Beam Angle	30°/60°/60°/90°/100°/120°

Mechanical Specifications

IP Rating	IP65
Lifetime	54000 hours - L70, @25°C
Heat Radiator	Anodized Aluminum
Lens	PC
Fixture Dimension	304*835*196mm 11.9*32.9*7.7 inches
Net Weight	17.0kg
Carton Dimension	880*390*260mm
Gross Weight	18.0kg

