

# F-EKD Series

## Economy Industrial Units

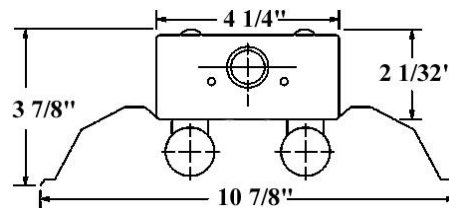


**Application:** This economy shop light unit is ideal for use in all industrial areas where increased light levels are desired.

**Construction:** This unit is designed from heavy gauge die formed steel and is finished in baked white enamel or polyester powder coating for maximum durability and reflectivity. Reflector, socket bar, and end plate, snap-on allowing for tool-free assembly. End plate doubles as coupler and aligner when fixture is used in continuous run. Symmetric and asymmetric reflectors are available.

**Electrical:** All units are furnished with UL Listed Class P thermally protected ballast. Other voltages are available upon request. Fixtures meet requirements for UL Luminaire Standard # 1598. All units comply with National Energy Standards.

**Mounting:** Fixture is equipped with provisions for surface mounting, pendant mounting, or chain hanging and can be installed either individually or in continuous runs. 7/8" knockout is provided in end plate for conduit connector.



Maximum Weight = 15 lbs./ 48" 30 lbs./ 96"

### Ordering Information

Specifications Subject To Change Without Notice

Model	# Lamps	Lamp Type	Ballast	Voltage	Options
<b>F-EKD</b>	<b>2</b>	<b>32</b>	<b>E</b>		
<b>F-EKD</b> (for T8 / T12)	1 = One 2 = Two	<u><b>T8 Lamps</b></u> <b>32 = F32T8</b>	<b>E = Electronic .88BF</b>	<b>MV= Multi Volt</b>	<b>EMB = Emergency Ballast</b>