

<b>Project:</b>	
<b>Type:</b>	
<b>Catalog #:</b>	

## STANDARD

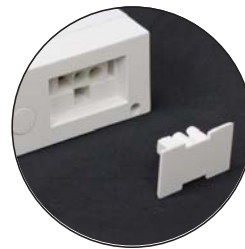


## APPLICATIONS

Allows for easy replacement of existing fluorescent, incandescent, halogen and xenon enclosure Cabinet Lighting. Built-in driver, captive screws and knockouts for easy installation in new work or remodel applications.

## FEATURES

- Built-in integral electronic driver
- Dimmable 120V
- On / Off rocker switch
- ≥80 or ≥90 CRI
- Available in 9 different lengths
- Rear panel punch-in electrical connectors for easy wiring
- 2700K, 3000K, 4000K, 5000K available
- 50,000 hour life expectancy
- Available in white, black and bronze
- Linkable up to 400W



Link several undercabinets together with the Linkable Connector Wire



Pre-positioned installation screws



### Under Cabinet Included Accessories



### Under Cabinet Available Accessories



MODEL	DESCRIPTION	INPUT VOLTAGE	CRI	WATTS	LUMENS	COLOR
FLEDUC8	Undercabinet Light - 8" x 3 1/2"	120V	> 90	4W	210	WH White
FLEDUC11	Undercabinet Light - 11" x 3 1/2"	120V	> 90	6W	470	BZ Bronze
FLEDUC14	Undercabinet Light - 14" x 3 1/2"	120V	> 90	9W	510	
FLEDUC18	Undercabinet Light - 18" x 3 1/2"	120V	> 90	11W	690	
FLEDUC22	Undercabinet Light - 22" x 3 1/2"	120V	> 90	11W	750	
FLEDUC29	Undercabinet Light - 29" x 3 1/2"	120V	> 90	13W	950	
FLEDUC32	Undercabinet Light - 32" x 3 1/2"	120V	> 90	15W	1100	
FLEDUC36	Undercabinet Light - 36" x 3 1/2"	120V	> 90	16W	1130	
FLEDUC48	Undercabinet Light - 48" x 3 1/2"	120V	> 90	18W	1430	