

LSL SERIES LED SPORT LIGHT

Project:	
Type:	
Catalog #:	



Product Description

LSL SERIES LED Sport Light Features The Most Powerful Japanese Citizen LED Chips, with narrow beam angle 15°23°38° 45°60° which can project as far as 1 mile distance, and MEANWELL HLG Drivers, High Purity Die Casting Aluminum Alloy Housings , Different Optical Lenses from 15 Deg to 60 Degree , Yoke Mounting and Slip Filter Mounting Available, DMX 512 available, Great For Replacing Traditional 1200-4000W Metal Halide.

Applications

Football Stadium, Seaport, Airport, and High Mast Poles lighting, etc



Electric Characteristic

Specification/Model	LSL-STU500W	LSL-STU600W	LSL-STU720W	LSL-STU1000W	LSL-STU1200W
LED Chips	CITIZEN 1212				
Input power	500W	600W	720W	1000W	1200W
Lumens output	70000LM	84000LM	100800LM	140000LM	168000LM
Efficiency	140LM/W	140LM/W	140LM/W	140LM/W	140LM/W
CRI	>70				
Color Temperature	4000K, 4500K, 5000K, 6000K				
Input voltage	100-277Vac				
Driver brand	Mean Well				
Beam angle	15°, 23°, 38°, 45°, 60°				
Housing	Die-Casting Aluminum Alloy, Anti-Corrosion Paint				
Mounting	Bracket Mount / Slip Filter				
Finish	Brown, Black, White				
Certificate	UL				
Equivalent	1000-1500W MH/HPS	1200W-1800W MH/HPS	1400-2100W MH/HPS	2000-3000W MH/HPS	2400-3600W MH/HPS

LSL SERIES LED SPORT LIGHT

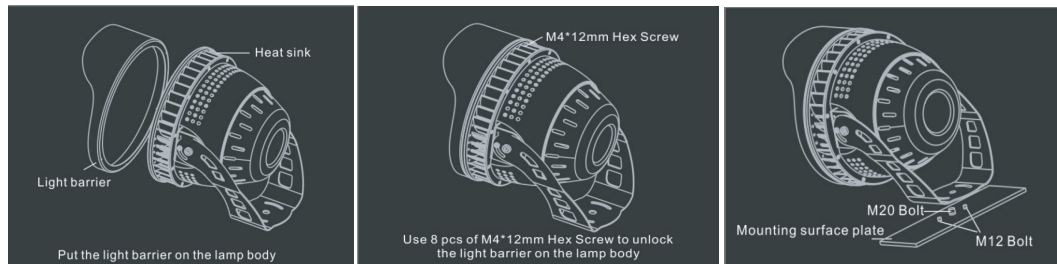


Ordering Information

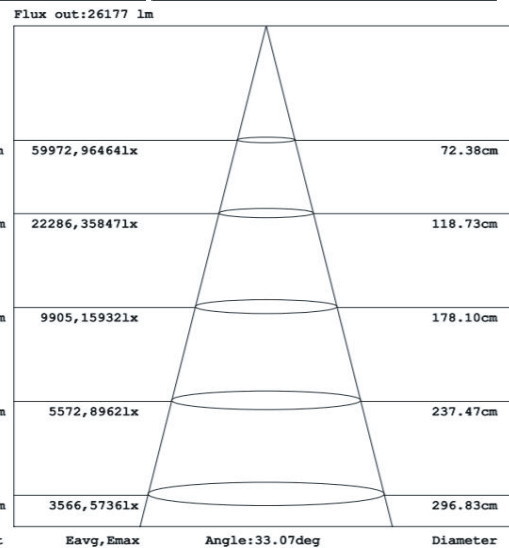
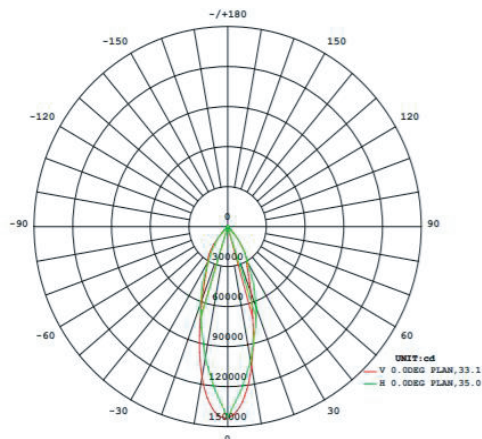
Example: LS-STU400W-40K-N-T

Product	Power	Replacement	Color Temperature	Photocell	Furnish
LSL-STU500W	500W	1000-1500W MH/HPS	40K 4000K 45K 4500K 50K 5000K 60K 6000K	N not photocell Y yes photocell	T-Black W-White
LSL-STU600W	600W	1200-1800W MH/HPS			
LSL-STU720W	720W	1400-2100W MH/HPS			
LSL-STU1000W	1000W	2000-3000W MH/HPS			
LSL-STU1200W	1200W	2400-3600W MH/HPS			

Installation



Photometrics

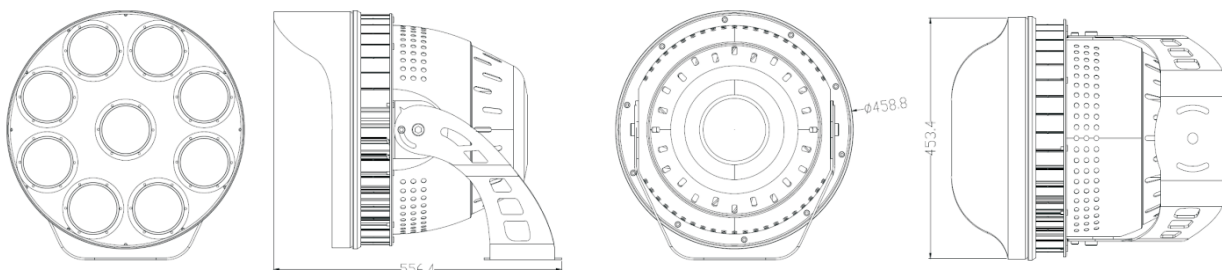


Projected LED Lumen Maintenance

Operating hours	0	25000	50000
Lumen maintenance factor	1	0.91	0.8

Data references the extrapolated performance projections for the LED Sport Light platform in a 25°C ambient, based on 10,000 hours of LED testing (tested per IESNA LM - 80-08 and projected per IESNA TM-21-11).

Dimensions (mm)



After-Sale Service

The product refers to electricians knowledge. Please don't disassemble it by yourself. If any quality problem happens, please contact the factory for warranty details.

NOTE: Actual performance may differ as a result of end-user environment and application. All values are without notice.