

Project:	
Type:	
Catalog:	

STANDARD

The powerful FME TWL-F series can be used as a direct wire linear fixture or as a linkable temporary work light. The TWL-F is available in 2', 3', 4' and 5' with linkable cables available at any length. The PC cover and aluminum housing is extremely durable (IK10 rating). The TWL-F is by design an LED luminaire and is a great replacement for the traditional vapor tight fluorescent/LED linear products. The IP66 rating is great for wet locations.

As a temporary work light, a magnet and loop (2) are mounted on top side of the fixture allowing complete mounting flexibility. Lumen output ranges are from 3,000 to 12,000 making this product an easy replacement for any 2 lamp to 4 lamp fluorescent fixture.

Extremely Long Life

50,000 Hours, 3 Years Warranty

Wide operation voltage

AC100-277V



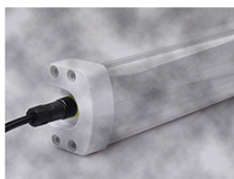
Feature



Water-Proof, IP66



Pressure-Proof, IK10



Dust-Proof Design

ORDERING INFORMATION

Model	Length	LED Qty	Power (W)	Luminous	Info
TWL-SF90L60	600mm/2ft	165pcs	30 watt	3000LM +- 1	SMD 2835 Chips
TWL-SF90L90	900mm/3ft	216pcs	40 watt	4000LM +- 1	CRI>82, PF>0.95
TWL-SF90L120	1200mm/4ft	312pcs	60 watt	6000LM +- 1	-30°C – 60°C
TWL-SF90L150	1500mm/5ft	408pcs	80 watt	8000LM +- 1	50,000 Lifetime
TWL-SF90L180	1800mm/6ft	504pcs	90 watt	9000LM +- 1	Certificate: ETL
TWL-SF90L140	2400mm/8ft	648pcs	120 watt	12000LM +- 1	DLC UL, TUV CE
					ROHS, SAA C-Tick, IP66 IK10